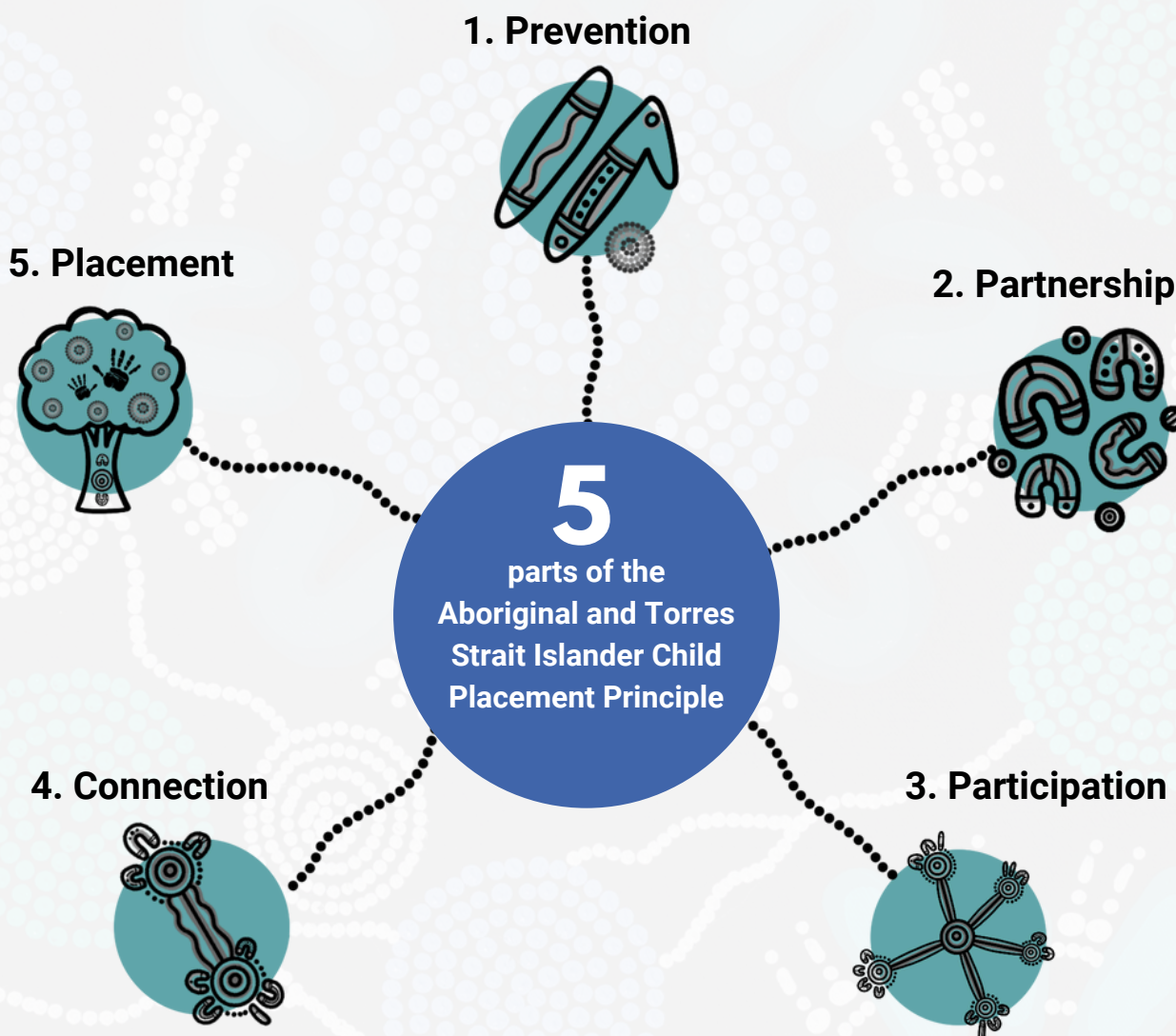


# The Aboriginal and Torres Strait Islander Child Placement Principle (The 'Placement Principle')

## What is the 'Placement Principle'?

The 'Placement Principle' is made up of 5 parts:



# What is the 'Placement Principle' for?

The 'Placement Principle' comes from Aboriginal activism. It is in child protection laws across Australia. It aims to protect Aboriginal and Torres Strait Islander people's rights and keep Aboriginal kids connected.

## 1. Prevention



### What does this mean?

- Stopping child protection from getting involved in the first place.
- Supporting Aboriginal people and communities to thrive.

### Questions you can ask

- What support have I had during my pregnancy?
- What support do I need while pregnant and around birth?

**Hint:** Who can I ask for help? E.g., Aboriginal Midwife, Aboriginal Medical Service, Elders.

## 2. Partnership



### What does this mean?

- Making sure that Aboriginal people are involved.
- This means that community makes services for community and Aboriginal people give services to Aboriginal people.

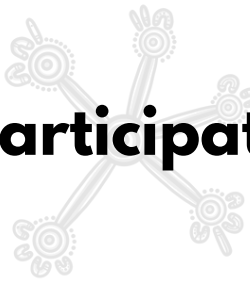
E.g., Aboriginal Community-Controlled Organisations (ACCOs)

### Questions you can ask

- Which services have I worked with?
- Are these services helping me with my worries?
- Do these services support me and share my values?

**Hint:** Have I had ACCOs supporting me? E.g., Aboriginal Medical Service.

# 3. Participation



## What does this mean?

- Aboriginal people are involved in decisions about Aboriginal children.
- When child protection is involved – Aboriginal parents and families should be involved in making decisions about their kids.

## Questions you can ask

- Who has a seat at the table?
- Do I have a lawyer or advocate?
- Can I invite who I want to meetings with child protection?
- Have I been offered family meetings? E.g. Family Group Conferencing or Aboriginal Family-Led Decision-Making (AFLDM).

**Hint:** Parents have a right to have a seat at the table in decisions about your bub.

See our *'Tips from Parents for Parents'* tip sheet.

# 4. Connection



## What does this mean?

- Aboriginal bubs have a right to grow up connected to Aboriginal family, community and culture.
- Aboriginal children need to be surrounded by Aboriginal people.
- Culture makes our kids strong.

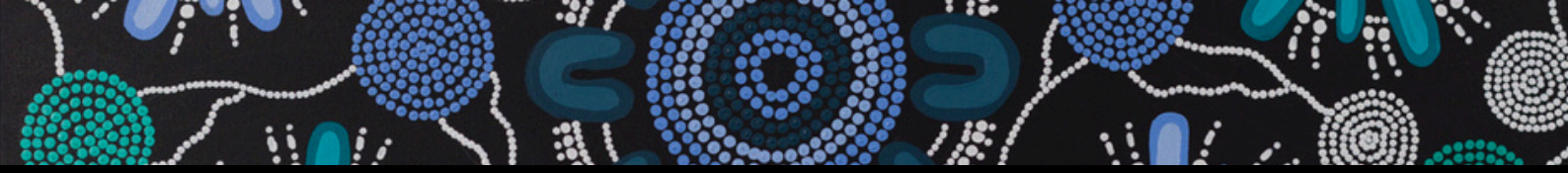
## Questions you can ask

*If bub goes into care:*

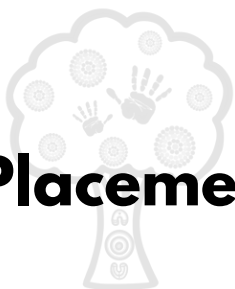
- How often is bub seeing their Aboriginal family?
- Do I have contact rights from the court?
- Which family and community is my bub connected to?
- Does bub have Aboriginal people around them?

**Hint:** Connection is about not repeating history, like the Stolen Generations.





# 5. Placement



## What does this mean?

- Making sure that Aboriginal kids grow up with family or Aboriginal people.
- When Aboriginal children go into care, child protection should follow a 'placement ladder'.
- The 'placement ladder' is the 'wish list' order of people bub should live with.

These people are:

### 1. Family:

Aboriginal and/or Torres Strait Islander family or non-Indigenous family.

### 2. Mob group:

Aboriginal and/or Torres Strait Islander people from bub's mob group.

### 3. Wider Community:

Aboriginal and/or Torres Strait Islander people not from bub's mob group.

### 4. Non-Indigenous people:

Who are not related to bub.

## Questions you can ask

*If bub goes into care:*

- Who do I want bub to live with?
- Have child protection asked all possible Aboriginal and/or Torres Strait Islander family members to care for bub?
- Have all the people I want to look after bub been asked by child protection?

**Hint:** Child protection don't know your family like you do.

Some Aboriginal families have lots of people who can care for bub.

Aboriginal families should get a say where bub lives.