



2021

Annual Report Child & Community Wellbeing Unit

Melbourne School of Population & Global Health
The University of Melbourne



THE UNIVERSITY OF
MELBOURNE



CONTENTS

04	From the Director	05	2021 Highlights at a Glance
06	About the Program	08	Media Snapshots
10	10 Years Beyond Bushfires - The Long Tail of Recovery	12	Children and Young People Bereaved by Domestic Homicide
14	PhD projects focused on Migration and Social Inclusion	16	Climate Change and Health
18	Design and Data Visualisation	20	2021 Team
22	Higher Degrees	24	2020 Internal Awards
26	2021 Research Outputs	31	Financial Summary



From the Director Professor Lisa Gibbs

Our focus on disaster resilience for individuals, families, schools and communities has continued to grow in response to recent disaster events in Australia. We were also proud to provide increased understanding and guidance for *long term* disaster recovery and resilience through the release of the [10 years Beyond Bushfires report](#). The report recommendations are already being widely used by government, emergency, recovery, community and education agencies across Australia and internationally.

The disaster resilience work has particular significance given the likelihood of disasters being more frequent and more severe in the future due to climate change. Fortunately, in 2021 we were able to welcome Professor Kathryn Bowen into our team, a world-renowned expert on climate change and health. It is fabulous to be able to collaborate with Kathryn and draw on her expertise and networks. Kathryn has a joint appointment with the Melbourne Law School to provide leadership across the University through *Melbourne Climate Futures*.

There has been important progress in our research on experiences of domestic violence for different groups in Australian society, including children and young people bereaved by domestic homicide. There has also been a focus on building the capacity of the next generation of researchers including a university-wide program supporting PhD Candidates focused on migration and social inclusion.

The Professor Elizabeth Waters' Memorial Travel Scholarship was not announced or awarded in 2021 because of pandemic-related restrictions on interstate and international travel. Previous scholarship recipients who had to cancel their travel will be able to carry their scholarships forward into 2022.

Professor Lisa Gibbs

Director, Child and Community Wellbeing Unit

2021 Highlights at a Glance

Trauma and Resilience

We released the 10 years Beyond Bushfires report to increase understanding of long term disaster impacts and to guide preparedness and recovery from current and future disaster events.

We developed an online resource with our partners called Listen to guide reflexive practice for practitioners supporting children and young people who have lost a parent due to domestic homicide.

Migration and Social Cohesion

We are building the capacity of the next generation of researchers to conduct meaningful research to help reduce racism and build social cohesion in Australia.

Changing Lifestyles and Healthy Futures

We contributed to COP26 and guides to climate science and adaptation.

We are also building the capacity of University of Melbourne staff to help mitigate the health impacts of climate change in Australia.

Capacity Building

We developed two new training courses, Masterclass for Presentation Skills and Creating Infographics for Research Impact. We also ran Data Visualisation for Knowledge Translation for various groups and organisations through 2021.



ABOUT THE PROGRAM

The work of the Child and Community Wellbeing Unit is conducted by an interdisciplinary team of leading public health researchers, working to address gaps in knowledge about child and community wellbeing.

Our research addresses key questions that inform decisions in policy and practice at the community, state, national and international levels. Our research projects are driven by a passion for justice, equity and human rights. We are concerned with the key drivers of health and wellbeing; the influence of culture and social contexts on a child's early years that impact health, educational, social and employment prospects later in life; and opportunities to promote health promoting change.

We have formed strong practice-research partnerships across a wide variety of sectors and disciplines, including government, education, emergency management, community health, dental health, disability and social work.

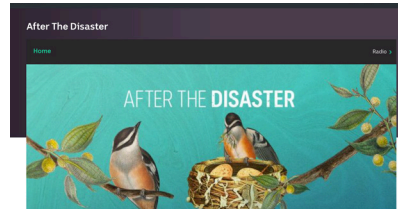
We engage members of the public, including children and their families, in decision making because research must be inclusive and broadly relevant if it is to contribute to community wellbeing. Through our partnerships we build the capacity of organisations to use research and evidence more effectively to improve health and wellbeing. We also learn from our partners about the context for our research and translation of findings into useful outputs.

Funding for this work requires great ideas, wonderful people, and significant and important findings. We wouldn't be able to achieve this without our funding partners, who share this vision for prevention, and recognition of the need for research in solving the complex problems.

The Child and Community Wellbeing Unit was previously known as the Jack Brockhoff Child Health and Wellbeing Program which was founded by inaugural Director, Professor Elizabeth Waters and was enabled by a substantial gift from the Jack Brockhoff Foundation. Sadly, Liz passed away in September 2015. We continue to be inspired by memories of her vitality and passion as we build on her legacy.



MEDIA SNAPSHOTS



After the Disaster Podcast

The After the Disaster podcast for people who have been affected by disasters was released in 2021 as a partnership between ABC, Red Cross and University of Melbourne (with funding support from Bushfire Recovery Victoria and the Bushfire Natural Hazards Cooperative Research Centre). All 15 episodes are available from ABC Listen or wherever you listen to podcasts.

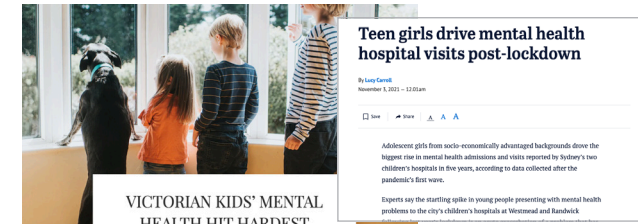


FIVE TAKEAWAYS FROM THE IPCC WORKING GROUP I REPORT

The Intergovernmental Panel on Climate Change (IPCC) has released the scientific playbook for charting our climate future – but we must act immediately

IPCC – Guide to Climate Change Report

This article provided a guide for discussion about the newly released Intergovernmental Panel on Climate Change (IPCC) report – “A scientific playbook for charting our climate future”.



VICTORIAN KIDS' MENTAL HEALTH HIT HARDEST DURING 2020

Prolonged Lockdown and Young People's Mental Health

These articles spoke about how the pandemic and prolonged lockdowns affected the mental health of young Victorian children and teen girls.



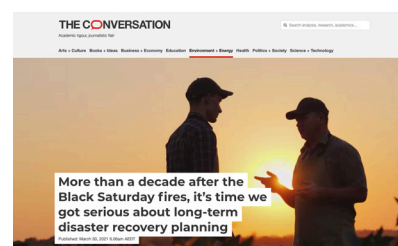
Children Left Behind by Domestic Violence

This article discussed that there are limited specialist services for children who lose a family member to violence in Australia and that there is no national protocol for support.



Commentary – Giving students time to recover from pandemic impacts

This article triggered national television coverage and a cross-departmental government roundtable about how to best support students affected by the pandemic.



Announcement – Research Report on Long Term Disaster Recovery

There was widespread radio, print and online coverage of the release of the 10 years Beyond Bushfires report.



Sound Installation on Family Life After Serious Injury

Ubiquity is a sound installation developed in collaboration with Associate Professor Eva Alisic. Ubiquity uses a study on trauma processing in children as the starting point for the artistic work.



Video Interview on Children & Trauma

This podcast episode explores how children recover from traumatic events such as extreme domestic violence.



10 YEARS BEYOND BUSHFIRES – THE LONG TAIL OF RECOVERY

We often see a huge outpouring of public compassion and support in the immediate aftermath of a major disaster with expectations of quick recovery, but our research shows the need for support (and funding) to be spread over years rather than rushed out.

About the project



The [10 Years Beyond Bushfires](#) report was released in March 2021. It presents an overview of key learnings about recovery 3, 5 and 10 years post disaster and provides recommendations on how to reduce risks and strengthen factors that support resilience.

The 10 years Beyond Bushfires study extended our original research conducted after the 2009 Victorian bushfires, including Black Saturday, to examine impacts on the mental health and wellbeing of community members, with a focus on how individual outcomes were influenced by social connections and community-level recovery.

Ten years after the bushfires there was substantial evidence of resilience but also extended mental health impacts for many, especially for those who had to deal with other major life stressors. Participants tended to be more positive about their own recovery after 10 years than the recovery of their community. The report highlighted the influence of close friends and family, social networks and the natural environment on resilience and recovery.

Recommendations were co-developed with stakeholder partners to help apply these findings to individual decision making, school and community-level strategies to strengthen resilience, and to guide recovery services.

Knowledge translation and impact

The 10 years Beyond Bushfires research was included in an invited submission to the Royal Commission into National Natural Disaster Arrangements and has influenced policy and practice across Australia and internationally. This research is also relevant for people affected by more recent events such as the Black Summer bushfires fires, the floods and pandemic.

Strategic partners for conducting research and translation into policy and practice

Phoenix Australia Centre for Posttraumatic Mental Health, Emergency Management Victoria, Australian Red Cross, University of New South Wales, Social Research Centre, Victorian Department of Health and Human Services, and Social Recovery Reference Group

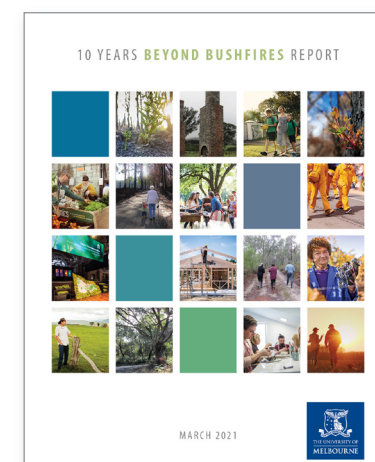
Funding Partners

- Emergency Management Victoria
- Australian Red Cross
- Victorian Department of Health and Human Services

Recent publications

The full list of Beyond Bushfires publications can be found at www.beyondbushfires.org.au

- Gibbs L, Harms L, Block K, Bryant RA, Forbes D, Ireton G, Richardson J, MacDougall C, Gallagher HC, O'Connell M, Molyneaux R, Quinn P. **10 Years Beyond Bushfires Report.** www.beyondbushfires.org.au: University of Melbourne, 2021.
- Cowlshaw S, Metcalf O, Varker T, Stone C, Molyneaux R, Gibbs L, Block K, Harms L, MacDougall C, Gallagher HC, Bryant R, Lawrence-Wood E, Kellett C, O'Donnell M, Forbes D. **Anger dimensions and disaster mental health: Distribution and implications after a major bushfire.** *Journal of Traumatic Stress* 2021;(34): 46-55 <http://dx.doi.org/10.1002/jts.22616>
- Bryant RA, Gibbs L, Colin Gallagher H, Pattison P, Lusher D, MacDougall C, Harms L, Block K, Ireton G, Richardson J, Forbes D, Molyneaux R, O'Donnell M. **The dynamic course of psychological outcomes following the Victorian Black Saturday bushfires.** *Aust N Z J Psychiatry.* 2021;55(7): 666-677. doi:[10.1177/0004867420969815](https://doi.org/10.1177/0004867420969815)
- Brady K, Gibbs L, Harms L. **Hierarchies of affectedness.** *Health and Place.* 2021; 72, Article 102687. <https://doi.org/10.1016/j.healthplace.2021.102687>



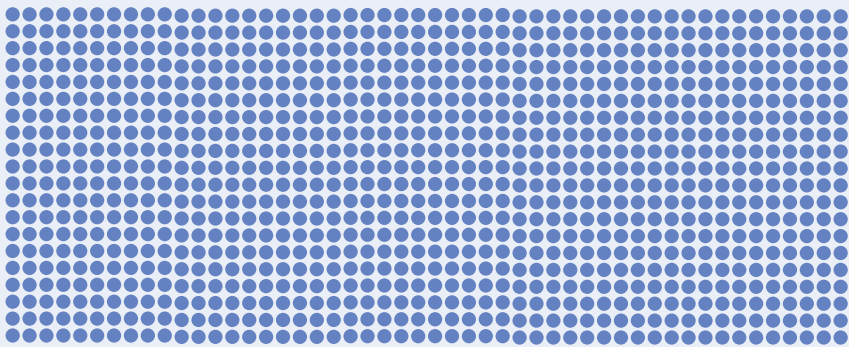
CHILDREN AND YOUNG PEOPLE BEREAVED BY DOMESTIC HOMICIDE

In the aftermath of a domestic homicide in which a parent is killed, police, family courts, child protection, family members and others make far-reaching decisions about children and young people’s futures. Their own views are not always heard or taken into account and there is little empirical knowledge on the topic overall.

About the project

This participatory project aims to contribute to improving support for children and young people who have been bereaved by domestic homicide. Our research objective is to generate a better understanding of children and young people’s living arrangement experiences, family and peer relationships, and identity development. Throughout Australia, we conduct online qualitative interviews with young people and adults with lived experience as a child, caregivers and family friends, and professionals. The study also has an international aspect, with our colleagues in the UK having started local data collection as well. Part of the project has also been the development of an online reflective practice resource called Listen. Listen contains audio, video and text elements, and is relevant not only to the specific topic but also the wider domain of traumatic grief and young person-centred approaches.

In the past two decades, approximately
1,000 AUSTRALIAN CHILDREN AND YOUNG PEOPLE
have lost a parent due to domestic homicide.



Knowledge translation and impact

Translation and impact are integral to this project, with our participants informing its direction and policy makers and practitioners expressing interest in the findings. In 2022, the rollout of student education and professional development sessions based on ‘Listen’ will be central.

Strategic partners for translation of research into policy and practice:

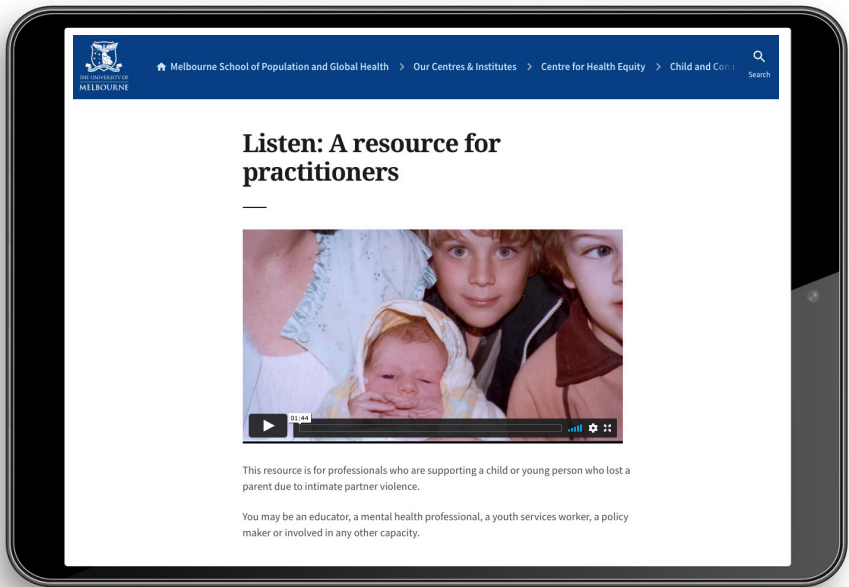
We are collaborating with a wide range of individuals and organisations in policy, advocacy, mental health, education, social services and other relevant areas.

Funding partners

- Australian Research Council
- The Myer Foundation

Key publications

Listen Resource



PHD PROJECTS FOCUSED ON MIGRATION AND SOCIAL INCLUSION

We have been supervising an exciting range of PhD projects which will help to grow the evidence base for supporting young people, women and families from migrant and refugee backgrounds.

About the project

Long time team member **Dana Young** is working with adolescent girls from migrant and refugee backgrounds to understand more about the role of sports participation in developing social capital.

Farnaz Shahimi is interviewing young adults and adolescents (along with their parents) who came to Australia as child refugees from Afghanistan to investigate the factors that support resilience.

Experiences of the family violence legal system for migrant and refugee women is the topic being explored by **Claire Sullivan**.

Other current projects include an investigation into alcohol and other drug use, and access to associated services, for young people from migrant and ethnic minority groups; Syrian refugee women's experiences of 'safe spaces' in Lebanon; the impact of housing experiences on mental health and settlement outcomes for people with refugee backgrounds in Australia; and provision of culturally responsive care to migrant and refugee women giving birth in the Victorian hospital system.

We also celebrated two PhDs being successfully completed: one highlighting the humanitarian protection needs of adolescent Rohingya boys who have fled violence in Myanmar; and the other focused on Australian grassroots community initiatives where people with and without refugee experience come together and engage in creative forms of storytelling.



Knowledge translation and impact

All of these projects are increasing our knowledge about how we can better support inclusion and wellbeing for migrants from diverse backgrounds and in diverse settings.

Strategic partners for translation of research into policy and practice

- Melbourne Social Equity Institute
- Victorian Foundation for the Survivors of Torture (Foundation House)
- Multicultural Centre for Women's Health

Funding partners

- The University of Melbourne
- The Australian government
- Melbourne Social Equity Institute

CLIMATE CHANGE AND HEALTH

The crisis of climate change continued unabated in 2021, despite the focus firmly on the COVID-19 pandemic.

About the project

The United Nations Climate Change Conference, more commonly referred to as COP26, was a substantial climate change event globally in 2021. University of Melbourne attendees included our new team member Professor Kathryn Bowen (attending remotely) who was involved in launching a number of reports and policy briefs (see further details below under Knowledge Translation).

Professor Kathryn Bowen is lead author of Working Group II of the Intergovernmental Panel on Climate Change (IPCC) and an author of the Summary for Policymakers, released in early 2022.

It was a year of climate-related activity within the University as well, with progress on our Sustainability Plan (for release early 2022) and commitments to strong emission reduction targets. On the research side, we formally established the Health, Environment, Research and Action (HERA) Collaborative (co-chaired by Kathryn Bowen and Lisa Gibbs), auspiced by Melbourne Climate Futures and Melbourne School of Population and Global Health. This is a group of passionate researchers working on issues related to climate change and other environmental changes. We held our regular meetings to discuss potential collaborations and current areas of work, responded to government strategies (e.g. submitted our comments to the Victorian Department of Health's draft human health and climate change adaptation strategy), and hosted a panel on academics and activism in the age of climate change. We have also welcomed two new PhD students – Sophie Robinson (commenced in Dec, 2021), who will be working on sustainability and climate change in relation to the healthcare system, and Phoebe Quinn (commencement in 2022) who will explore the role of civic technologies in community decision-making in the face of climate change and disasters. Two groups of researchers led by Child and Community Wellbeing Unit members (Phoebe Quinn, Katitiza Marinkovic Chavez and Colin Gallagher) were successful in being awarded Climate Research Accelerator funding via Melbourne Climate Futures.

We are looking forward to many more ideas, collaborations and strategies to strengthen our policy impact in the arena of climate change and human health in 2022 and beyond.

Knowledge translation and impact:

Peel, J. Bowen K, Neville B. **Five Takeaways from the IPCC Working Group I Report.** Pursuit. University of Melbourne. <https://pursuit.unimelb.edu.au/articles/five-takeaways-from-the-ipcc-working-group-i-report?fbclid=IwAR1a-y-kg8YzLFp28e1RjboBEzvIY4ndI06AFsVVFpZNBsrq7gaSC3kAaww>

Professor Bowen was also an author or reviewer on these documents for policymakers on climate science:

- Summary report of 10 new insights in climate science. <https://10insightsclimate.science>
- United Nations Environment Programme (2021). Adaptation Gap Report 2021: The gathering storm – Adapting to climate change in a post-pandemic world. Nairobi. <https://www.unep.org/adaptation-gap-report-2021>

Funding partners

- University of Melbourne – Melbourne Climate Futures
- Federal Department of Industry, Science, Energy and Resources w

Key publications

- Bowen KJ, Murphy N, Dickin S, Dzebo A, Ebikeme C. **Health Synergies across International Sustainability and Development Agendas: Pathways to Strengthen National Action.** (2021) Int J Environ Res Public Health. 9;18(4):1664. doi: 10.3390/ijerph18041664. PMID: 33572410; PMCID: PMC7916188.
- de Paula N, Jung L, Mar K, Bowen K, Maglakelidze M, Funderich M, Otieno M, El Omrani O, Baunach S, Gepp S. **A planetary health blind spot: the untapped potential of women to safeguard nature and human resilience in LMICs.** (2021). Lancet Planet Health. 5(3):e109-e110. doi: 10.1016/S2542-5196(21)00007-3. Epub 2021 Mar 7. PMID: 33691087.
- Scheelbeek, P. F. D., Dangour, A. D., Jarmul, S., Turner, G., Sietsma, A. J., Minx, J. C., Callaghan, M., Ajibade, I., Austin, S. E., Biesbroek, R., Bowen, K. J., Chen, T., Davis, K., Ensor, T., Ford, J. D., Galappaththi, E. K., Joe, E. T., Musah-Surugu, I. J., Alverio, G. N., ... Berrang-Ford, L. (2021). **The effects on public health of climate change adaptation responses: A systematic review of evidence from low- and middle-income countries.** Environmental Research Letters: ERL, 16(7), 073001. <https://doi.org/10.1088/1748-9326/ac092c>



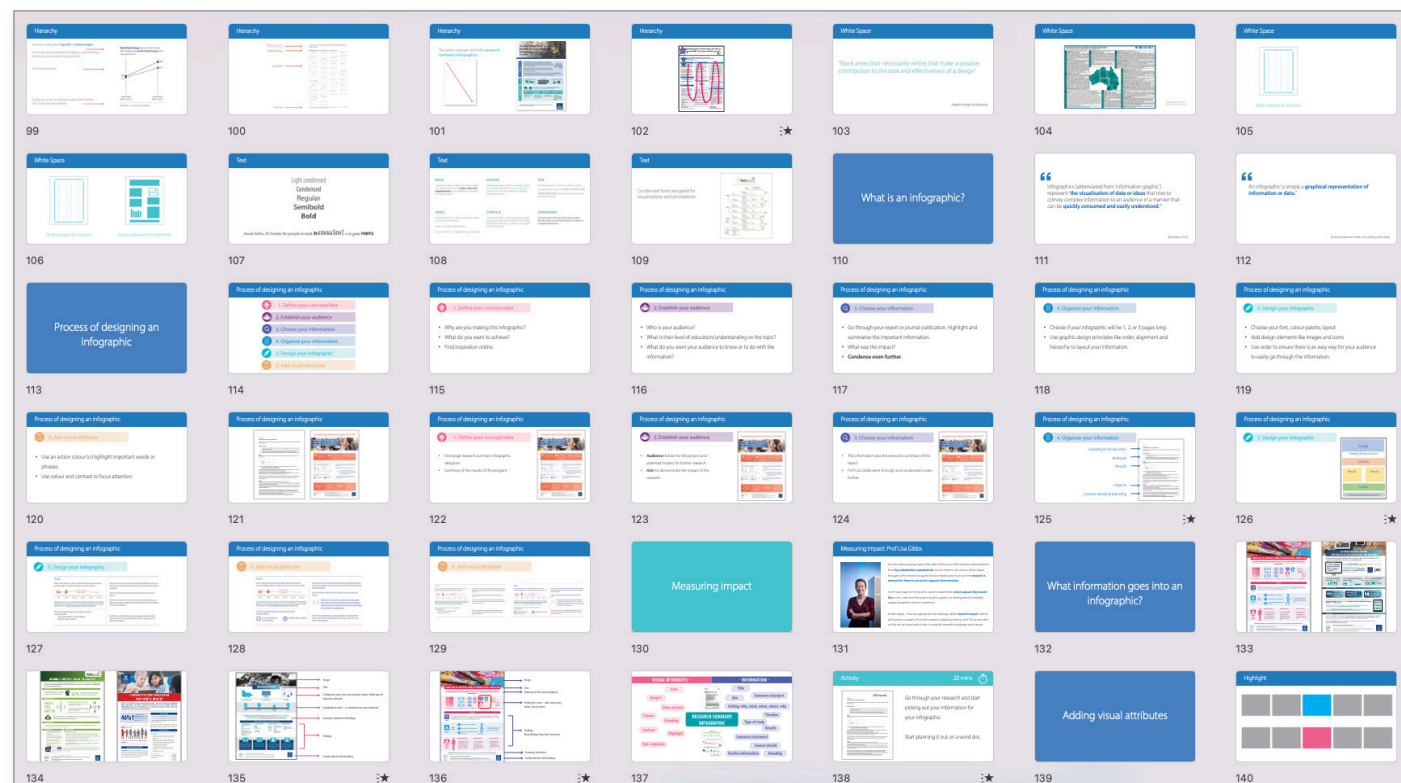
DESIGN AND DATA VISUALISATION

Training

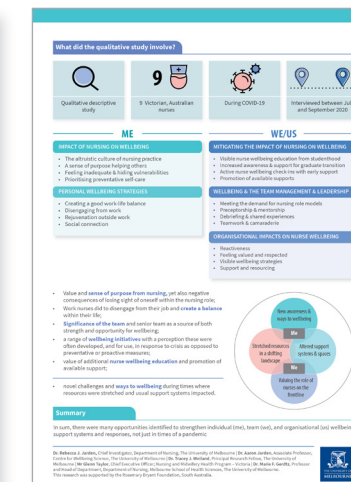
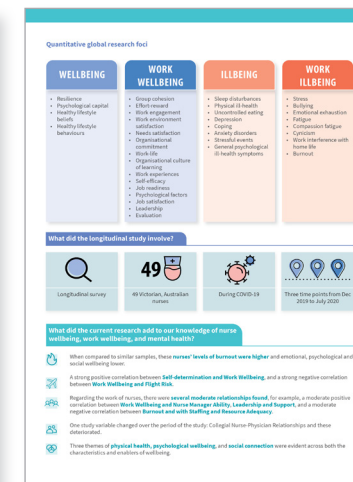
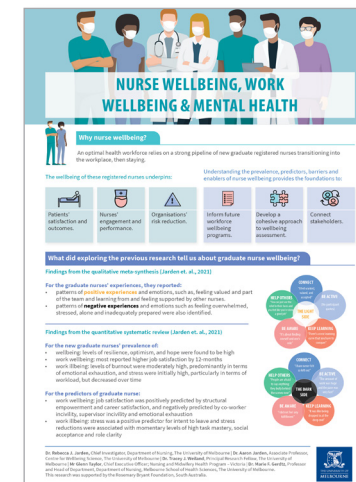
Two new training courses, **Masterclass for Presentation Skills** and **Creating Infographics for Research Impact** were developed in 2021. The courses were run for several organisations including NSW Health, Victorian Comprehensive Cancer Centre, Health Research Services Association and Australian Centre for Health Services Innovation (AusHSI). The focus for both courses was to use the principles of graphic design to turn academic research into visually compelling graphics and slides to aid in sharing of knowledge with the desired audience. Both courses begin with a training session, followed by a break which allows participants time to implement learnings in their work. This is then followed by a live Q&A session where questions and advice are answered in real time and participants can share their work. Both workshops were very popular and will run again in 2022.

Client feedback

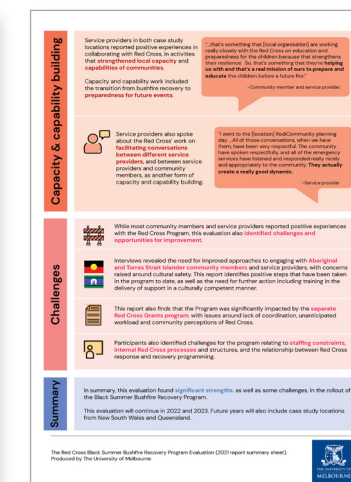
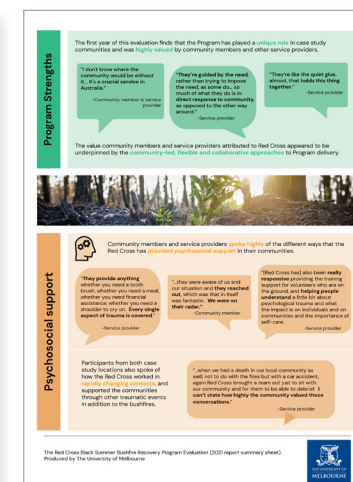
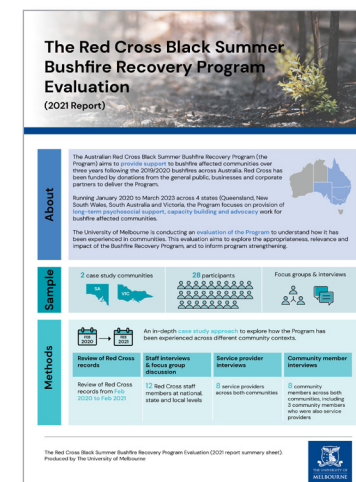
- “ This was a great course! Alana brought so much **knowledge and experience**. Overall the whole workshop was really well put together and was ran very smoothly. Everything was easy to follow and informative. ”
- “ Alana obviously enjoys what she does and that came through in the **workshop, very enjoyable**. ”
- “ An excellent workshop, the learning from which will be **put into immediate use**. ”



SOME 2021 RESEARCH SUMMARIES



Nurse Wellbeing,
Work Wellbeing
and Mental
Health research
summary



The Red Cross
Black Summer
Bushfire Recovery
Program
Evaluation
research
summary



Intimate Partner Violence
Infographic designed for
Phoenix Australia

2021 TEAM



Professor Lisa Gibbs is the Director of Child and Community Wellbeing Unit and supported by the Associate Directors: Associate Professor Eva Alisic and Dr Karen Block.

The senior leadership team are responsible for the management of research projects, research strategy, research income, staff development and operational issues.

They were supported by Associate Professor Cathy Vaughan and Prof Richard Chenhall, Directors of the Centre for Health Equity, which is situated within the Melbourne School of Population and Global Health under the leadership of Professor Nancy Baxter. They also receive excellent ongoing professional support by the Centre and School finance and administration teams, in particular Michelle Kelsey, Business Manager.

The Child and Community Wellbeing Unit is also grateful for the ongoing advice and expertise of our Advisory Committee (see next page for Committee members).

STAFF

A/Prof Eva Alisic	Prof Lisa Gibbs	Hannah Morrice
Dr Karen Block	Greg Ireton	Robyn Molyneaux
Dr Kathryn Bowen	Kathryn Joy	Alana Pirrone
Dr Kate Brady	Edwin Kwong	Phoebe Quinn
Dr Lauren Carpenter	Dr Claire Leppold	Ashwini Sakthiakumaran
Dr Colin Gallagher	Dr Katitza Marinkovic Chavez	Dana Young

HIGHER DEGREE

Christopher Boyer	Katitza Marinkovic Chavez	Shantelle Smith
Meg Chin	Cassandra McEwen	Sarah Strauven
Dr Bradley Christian	Sheenagh McShane	Claire Sullivan
Rachel Chung	Nabreesa Murphy	Martha Vazquez Corona
Oliver Eastwood	Hala Nasr	Maxine Wells
Shane Harrison	Patricia Nayna-Schwertdle	Shelby Williamson
Greg Ireton	Sophie Robinson	Jeana Wong
Jonathon Januar	Cecily Schwab	Stephanie Youil
Revathi Krishna	Farnaz Shahimi	Dana Young

HONORARY

Dr Rebecca Armstrong National Disability Insurance Agency	Dr John Frederick University of Melbourne	Professor Laurence Moore University of Glasgow
Professor Rona Campbell University of Bristol	Dr Kim-Michelle Gilson Royal Children's Hospital	Dr Sandra Passardi University Hospital Zurich
Andrew Coghlan Australian Red Cross	Dr Martin Hall Dental Health Services Victoria	John Richardson Australian Red Cross
Dr Simon Crouch Department of Health and Human Services	Dr Ashrafalsadat Hosseini Foundation House	Dr Elena Swift Griffith University
Dr Elise Davis Summer Foundation	Emeritus Professor Colin MacDougall Flinders University	Dr Mira Vasileva University of Melbourne

ADVISORY COMMITTEE

Chairperson: Professor Dorothy Scott OAM, The University of Melbourne (Honorary)	Professor Rob Moodie The University of Melbourne	Dr Priscilla Seyfort Cobaw Community Health Services Ltd
Dr Robert Grenfell CSIRO	Ms Emily Myer Myer Foundation	Professor Katrina Williams Monash University
Professor Paul Monagle Royal Children's Hospital	Associate Professor Georgia Paxton Royal Children's Hospital	

HIGHER DEGREES

PHD PROJECTS

CHRISTOPHER BOYER

Heatwave early warning systems – challenges for implementation in Sub-Saharan Africa
Supervisors: Prof Kris Ebi, Prof Kathryn Bowen, Prof Jeremy Hess
National Institutes of Health (US). Enrolled through the University of Washington, US.

MEG CHIN

When a child dies from a life-threatening condition: Hearing the voices of bereaved siblings (2017-2021).
Supervisors: Prof Louise Harms, Prof Lisa Gibbs.

JONATHAN JANUAR

Missing data mechanisms in covert networks (2021-2024).
Supervisors: Dr Johan Koskinen, Dr Colin Gallagher.

SHEENAGH MCSHANE

Understanding the role of housing in mental health outcomes for refugees over time (2021-2024).
Supervisors: Prof Rebecca Bentley, Dr Karen Block, Prof Emma Baker.

NABREESA MURPHY

Young people's sexual and reproductive health and rights in the Pacific in times of climate change-related disasters
Supervisors: A/Prof Meghan Bohren, A/Prof Peter Azzopardi, Prof Kathryn Bowen.

HALA NASR

Women-only safe spaces as a response to gender-based violence: Experiences, limitations and possibilities for refugee women. (2018-2022).
Supervisors: A/Prof Cathy Vaughan, Dr Karen Block.
Australian Government Research Training Program (RTP) Scholarship.

PATRICIA NAYNA-SCHWERTDLE

Migration, human health and climate change – investigating the nexus
Supervisors: Prof Ina Danquah, Prof Kathryn Bowen, Prof Rainer Sauerborn
Enrolled through University of Heidelberg, Germany.

SOPHIE ROBINSON

Climate change, sustainability and healthcare systems
Supervisors: Prof Kathryn Bowen, Prof Glenn Hoetker.

CECILY SCHWAB

In the Arena: Striving for Excellence in CEO Mental Health (2021-2025).
Supervisors: Prof David Forbes, Prof Isabel Metz, Prof Lisa Gibbs.

FARNAZ SHAHIMI

Childhood Resilience and Sense of Identity among Afghans with a Refugee background: A Social Ecological Perspective (2019-2023).
Supervisors: Dr Karen Block, A/Prof Eva Alisic.
Melbourne Research Scholarship.

CLAIRE SULLIVAN

Legal responses to violence: Experiences of migrant and refugee women (2018-2023).
Supervisors: Dr Karen Block, A/Prof Cathy Vaughan.
Australian Government Research Training Program Scholarship (with additional research support funds from the Melbourne Social Equity Institute).

MARTHA VAZQUEZ CORONA

Giving mums a fair go: culturally responsive maternity care (2021-2024).
Supervisors: A/Prof Meghan Bohren, Dr Karen Block.
Human Rights Scholarship.

SHELBY WILLIAMSON

The natural environment and peoples' mental health (2021-2025).
Supervisors: Prof Kathryn Bowen, Prof Lisa Gibbs.
Australian Government Research Training Program (RTP) Scholarship.

DANA YOUNG

Sports participation, social capital and health for migrant adolescent girls (2018-2024).
Supervisors: Dr Karen Block, Prof Lisa Gibbs.
National Health and Medical Research Council Postgraduate Scholarship.

We are very pleased to announce the following PhD submissions:

CAITLIN DOUGLASS

Exploring alcohol and other drug use among migrant and ethnic minority groups (2018-2021).
Supervisors: Dr Megan Lim, Professor Margaret Hellard, Dr Karen Block, Dr Danielle Horyniak.
Australian Government Research Training Program (RTP) Scholarship.

CASSANDRA MCEWEN

Young refugees experiencing moral injury (Clinical PhD), (2018-2021)
Supervisors: Dr Laura Jobson, A/Prof Eva Alisic
Australian Government Research Training Program (RTP) Scholarship.

We are very pleased to announce the following PhD successful completions:

DR BRADLEY CHRISTIAN

Caries Risk Assessment Tools: The Evidence (2014-2020).
Supervisors: Prof Lisa Gibbs, Prof Hanny Calache, Geoff Adams.
Australian Postgraduate Award.

SHANE HARRISON

Complex survivors: adolescent boys and the humanitarian response to the Rohingya refugee crisis (2017-2021).
Supervisors: A/Prof Cathy Vaughan, Dr Karen Block, Prof Richard Chenhall.
Human Rights Scholarship.

REVATHI KRISHNA

Child-co-developed, child-centred disaster risk reduction in Chennai, India (2016-2021)
Supervisors: A/Prof Eva Alisic, Prof Kevin Ronan†, Dr Caroline Spencer
Monash University International Postgraduate Research Scholarship.

KATITZA MARINKOVIC CHAVEZ

Scaling-up participatory research with children – investigating the influence on co-researchers' critical consciousness and their agency in the research process (2016-2020).
Supervisors: Prof Lisa Gibbs, Dr Karen Block.
Becas-Chile Scholarship.

SARAH STRAUVEN

People with and without refugee experience co-creating a shared world through narrative practices (2017-2021).
Supervisors: Dr David Denborough, Dr Karen Block, Prof David Rose.
Melbourne Research Scholarship.

We note that two PhD Candidates made the difficult decision to withdraw in 2021.

MASTERS PROJECTS

Master of Public Health

RACHEL CHUNG

Developing strategies for improving engagement with culturally and linguistically diverse (CALD) communities in a new Public Health Unit (NEPHU) at Northern Health
Supervisors: Phoebe Quinn, Dr Karen Block.

JESSICA CLARKE

What are the barriers and enablers for equitable access to green and blue space And what determines equitable access to nature-based solutions
Supervisors: Prof Kathryn Bowen, Shelby Williamson.

SHANTELE SMITH

The psychosocial and practical challenges of parental cancer on adolescents
Supervisor: Dr Ash Hosseini.

JEANA WONG

The happiness and wellbeing of Australian children in the year of COVID-19: A quantitative analysis of ABC television's Behind the News online happiness survey results
Supervisors: Dr Lauren Carpenter and Dr Katitza Marinkovic Chavez.

Master of Psychology

OLIVER EASTWOOD

Identity development in the wake of domestic homicide
Supervisors: Dr Rowena Conroy, A/Prof Eva Alisic.

HONOURS PROJECTS

MAXINE WELLS

Assessment of the acceptability and feasibility of a pilot survey to assess racial literacy in the community sport setting and an exploration of preliminary findings
Supervisors: Dr Karen Block, Dana Young, Dr Lauren Carpenter.

STEPHANIE YUJIL

Intervention addressing anxiety and depression in adolescents and youth impacted by parental cancer: A systematic literature review and meta-analysis
Supervisors: Dr Ash Hosseini and Professor Carlene Wilson.

DEAN'S AWARD

PHOEBE QUINN

Phoebe Quinn was finally able to receive her Dean's Award as top Master of Public Health student of the 2019 graduating cohort (2020 ceremony postponed due to pandemic).



2020 INTERNAL AWARDS



DR MIRA VASILEVA

Award for research excellence in trauma and resilience



ALANA PIRRONE

Award for professional excellence in data visualisation, knowledge translation and capacity building



MICHELLE KELSEY

Award for professional excellence in business management



CHILDREN & DISASTERS ADVISORY COMMITTEE

Award for excellence in research agenda guidance and knowledge translation



2021 RESEARCH OUTPUTS

PUBLICATIONS

Backholer, K., Baum, F., Finlay, S., Friel, S., Giles-Corti, B., Jones, A., Patrick, R., Shill, J., Townsend, B., Armstrong, F., Baker, P., Bowen, K., Browne, J., Büsst, C., Butt, A., Canuto, K., Canuto, K., Capon, A., Corben, K., ... Büsst, C. E. D. J., Lewis Keane and Cara. (2021). **Australia in 2030: What is our path to health for all?** Medical Journal of Australia, 214(8). <https://www.mja.com.au/journal/2021/214/8/australia-2030-what-our-path-health-all>

Berrang-Ford, L., Siders, A. R., Lesnikowski, A., Fischer, A. P., Callaghan, M. W., Haddaway, N. R., Mach, K. J., Araos, M., Shah, M. A. R., Wannewitz, M., Doshi, D., Leiter, T., Matavel, C., Musah-Surugu, J. I., Wong-Parodi, G., Antwi-Agyei, P., Ajibade, I., Chauhan, N., Kakenmaster, W., ... Bowen, K.J., Abu, T. Z. (2021). **A systematic global stocktake of evidence on human adaptation to climate change.** *Nature Climate Change*, 11(11), 989–1000. <https://doi.org/10.1038/s41558-021-01170-y>

Block, K., Hourani, J., Sullivan, C., & Vaughan, C. (2021). **“It’s about Building a Network of Support”: Australian Service Provider Experiences Supporting Refugee Survivors of Sexual and Gender-Based Violence.** *Journal of Immigrant & Refugee Studies*, 0(0), 1–15. <https://doi.org/10.1080/15562948.2021.1930321>

Bowen KJ, Murphy N, Dickin S, Dzebo A, Ebikeme C. **Health Synergies across International Sustainability and Development Agendas: Pathways to Strengthen National Action.** *Int J Environ Res Public Health*. 2021 Feb 9;18(4):1664. doi: 10.3390/ijerph18041664. PMID: 33572410; PMCID: PMC7916188.

Brady, K., Gibbs, L., & Harms, L. (2021). **Hierarchies of affectedness after disasters.** *Health & Place*, 72, 102687. <https://doi.org/10.1016/j.healthplace.2021.102687>

Bryant, R. A., Gibbs, L., Colin Gallagher, H., Pattison, P., Lusher, D., MacDougall, C., Harms, L., Block, K., Ireton, G., Richardson, J., Forbes, D., Molyneaux, R., & O'Donnell, M. (2021). **The dynamic course of psychological outcomes following the Victorian Black Saturday bushfires.** *Australian & New Zealand Journal of Psychiatry*, 55(7), 666–677. <https://doi.org/10.1177/0004867420969815>

Chalastani, V. I., Ajibade, I., ... Bowen, K.J. Global Adaptation Mapping Initiative Team. (2021). **Global evidence of constraints and limits to human adaptation.** *Regional Environmental Change*, 21(3), 85. <https://doi.org/10.1007/s10113-021-01808-9>

Cowlishaw, S., Metcalf, O., Varker, T., Stone, C., Molyneaux, R., Gibbs, L., Block, K., Harms, L., MacDougall, C., Gallagher, H. C., Bryant, R., Lawrence-Wood, E., Kellett, C., O'Donnell, M., & Forbes, D. (2021). **Anger Dimensions and Mental Health Following a Disaster: Distribution and Implications After a Major Bushfire.** *Journal of Traumatic Stress*, 34(1), 46–55. <https://doi.org/10.1002/jts.22616>

de Paula, N., Jung, L., Mar, K., Bowen, K., Maglakelidze, M., Funderich, M., Otieno, M., Omrani, O. E., Baunach, S., & Gepp, S. (2021). **A planetary health blind spot: The untapped potential of women to safeguard nature and human resilience in LMICs.** *The Lancet Planetary Health*, 5(3), e109–e110. [https://doi.org/10.1016/S2542-5196\(21\)00007-3](https://doi.org/10.1016/S2542-5196(21)00007-3)

De Young, A. C., Paterson, R. S., Brown, E. A., Egberts, M. R., Le Brocque, R. M., Kenardy, J. A., Landolt, M. A., Marsac, M. L., Alisic, E., & Haag, A.-C. (2021). **Topical Review: Medical Trauma During Early Childhood.** *Journal of Pediatric Psychology*, 46(7), 739–746. <https://doi.org/10.1093/jpepsy/jsab045>

De Young, A. C., Vasileva, M., Boruszak-Kiziukiewicz, J., Demipence Seçinti, D., Christie, H., Egberts, M. R., Anastassiou-Hadjicharalambous, X., Marsac, M. L., Ruiz, G., & COVID-19 Unmasked Global Collaboration incl Alisic, E. (2021). **COVID-19 Unmasked Global Collaboration Protocol: Longitudinal cohort study examining mental health of young children and caregivers during the pandemic.** *European Journal of Psychotraumatology*, 12(1), 1940760. <https://doi.org/10.1080/20008198.2021.1940760>

Douglass, C. H., Block, K., Horyniak, D., Hellard, M. E., & Lim, M. S. C. (2021). **Addressing alcohol and other drug use among young people from migrant and ethnic minority backgrounds: Perspectives of service providers in Melbourne, Australia.** *Health & Social Care in the Community*, 29(6), e308–e317. <https://doi.org/10.1111/hsc.13355>

Ebi KL, Bowen KJ, Calkins J, Chen M, Huq S, Nalau J, Palutikof JP, Rosenzweig C. **Interactions between two existential threats: COVID-19 and climate change.** *Clim Risk Manag*. 2021;34:100363. doi: 10.1016/j.crm.2021.100363. Epub 2021 Sep 6. PMID: 34518797; PMCID: PMC8426141.

Gibbs, L., Marinkovic, K., Nurse, J., Tong, L. A., Tekin, T., Ulubasoglu, M., Callard, N., Cowlishaw, S., & Cobham, E. V. (2021). **Child and Adolescent Psychosocial Support Programs Following Natural Disasters—A Scoping Review of Emerging Evidence.** *Current Psychiatry Reports*, 23(12), 82. <https://doi.org/10.1007/s11920-021-01293-1>

Harms, L., Gibbs, L., Ireton, G., MacDougall, C., Brady, K., Kosta, L., Block, K., Baker, E., Gallagher, H.C., Kellett, C., Forbes, D. & Bryant, R. (2021) **Stressors and supports in post-disaster recovery: Experiences after the Black Saturday bushfires.** *Australian Social Work* ,74:3, 332-347.

Hourani, J., Block, K., Phillimore, J., Bradby, H., Ozcurumez, S., Goodson, L., & Vaughan, C. (2021). **Structural and Symbolic Violence Exacerbates the Risks and Consequences of Sexual and Gender-Based Violence for Forced Migrant Women.** *Frontiers in Human Dynamics*, 3. <https://www.frontiersin.org/article/10.3389/fhumd.2021.769611>

Klocker, N., Hodge, P., Dun, O., Crosbie, E., Dufty-Jones, R., McMichael, C., Block, K., Piper, M., Musoni, E., Ford, L., Jordan, C., & Radford, D. (2021). **Spaces of well-being and regional settlement: International migrants and the rural idyll.** *Population, Space and Place*, 27(8), e2443. <https://doi.org/10.1002/psp.2443>

Kosta, L., Harms, L., Gibbs, L., & Rose, D. (2021). **Being a Parent after a Disaster: The New Normal after the 2009 Victorian Black Saturday Bushfires.** *The British Journal of Social Work*, 51(5), 1759–1778. <https://doi.org/10.1093/bjsw/bcab104>

Krishna, R. N., Ronan, K., Spencer, C., & Alisic, E. (2021). **The lived experience of disadvantaged communities affected by the 2015 South Indian floods: Implications for disaster risk reduction dialogue.** *International Journal of Disaster Risk Reduction*, 54, 102046. <https://doi.org/10.1016/j.ijdrr.2021.102046>

Leppold, C., Gibbs, L., Block, K., Reifels, L., & Quinn, P. (2022). **Public health implications of multiple disaster exposures.** *The Lancet. Public Health*, 7(3), e274–e286. [https://doi.org/10.1016/S2468-2667\(21\)00255-3](https://doi.org/10.1016/S2468-2667(21)00255-3)

Marck, C. H., Hunter, A., Heritage, B., Gibbs, L., Kermode, A. G., Walker, D. I., & Learmonth, Y. C. (2021). **The effect of the Australian bushfires and the COVID-19 pandemic on health behaviours in people with multiple sclerosis.** *Multiple Sclerosis and Related Disorders*, 53. <https://doi.org/10.1016/j.msard.2021.103042>

Moodie, R., Bennett, E., Kwong, E. J. L., Santos, T. M., Pratiwi, L., Williams, J., & Baker, P. (2021). **Ultra-Processed Profits: The Political Economy of Countering the Global Spread of Ultra-Processed Foods – A Synthesis Review on the Market and Political Practices of Transnational Food Corporations and Strategic Public Health Responses.** *International Journal of Health Policy and Management*, 10 (Special Issue on Political Economy of Food Systems), 968–982. <https://doi.org/10.34172/ijhpm.2021.45>

Nomura, S., Murakami, M., Ozaki, A., Sawano, T., Leppold, C., Nishikawa, Y., Saito, H., Oikawa, T., & Tsubokura, M. (2021). **Comparative risk assessment of non-communicable diseases by evacuation scenario– a retrospective study in the 7 years following the Fukushima Daiichi nuclear power plant accident.** *Global Health Action*, 14(1), 1918886. <https://doi.org/10.1080/16549716.2021.1918886>

Rocklöv, J., Huber, V., Bowen, K., & Paul, R. (2021b). **Taking globally consistent health impact projections to the next level.** *The Lancet Planetary Health*, 5(7), e487–e493. [https://doi.org/10.1016/S2542-5196\(21\)00171-6](https://doi.org/10.1016/S2542-5196(21)00171-6)

Scheelbeek, P. F. D., Dangour, A. D., Jarmul, S., Turner, G., Sietsma, A. J., Minx, J. C., Callaghan, M., Ajibade, I., Austin, S. E., Biesbroek, R., Bowen, K. J., Chen, T., Davis, K., Ensor, T., Ford, J. D., Galappaththi, E. K., Joe, E. T., Musah-Surugu, I. J., Alverio, G. N., ... Berrang-Ford, L. (2021). **The effects on public health of climate change adaptation responses: A systematic review of evidence from low- and middle-income countries.** *Environmental Research Letters: ERL*, 16(7), 073001. <https://doi.org/10.1088/1748-9326/ac092c>

Schultz, J.-H., Forsberg, J. T., Harb, G., & Alisic, E. (2021). **Prevalence and Characteristics of Posttraumatic Nightmares in War- and Conflict-Affected Students.** *Nature and Science of Sleep*, 13, 423–433. <https://doi.org/10.2147/NSS.S282967>

Thomas, A., Theokritoff, E., Lesnikowski, A., Reckien, D., Jagannathan, K., Cremades, R., Campbell, D., Joe, E. T., Sitati, A., Singh, C., Segnon, A. C., Pentz, B., Musah-Surugu, J. I., Mullin, C. A., Mach, K. J., Gichuki, L., Galappaththi, E., Chalastani, V. I., Ajibade, I., ... Global Adaptation Mapping Initiative Team. (2021). **Global evidence of constraints and limits to human adaptation.** *Regional Environmental Change*, 21(3), 85. <https://doi.org/10.1007/s10113-021-01808-9>

Vasileva, M., Alisic, E., & De Young, A. (2021). **COVID-19 unmasked: Preschool children’s negative thoughts and worries during the COVID-19 pandemic in Australia.** *European Journal of Psychotraumatology*, 12(1), 1924442. <https://doi.org/10.1080/20008198.2021.1924442>

Young, D., Gibbs, L., Gilson, K.-M., Williams, K., Reddihough, D., Tracy, J., Tonmukayakul, U., & Carter, R. (2021). **Understanding key worker experiences at an Australian Early Childhood Intervention Service.** *Health & Social Care in the Community*, 29(6), e269–e278. <https://doi.org/10.1111/hsc.13350>

REPORTS

Aboutalebi Karkavandi, M., Gallagher, H. C., Lusher, D., Wang, P., Kyndt, E., Block, K., McKenzie, V. (2021). **The Networked Teacher: The Role of Social Support and Information Sharing for Teacher Mental Health.** Final Report to Teachers Health Foundation. Swinburne University of Technology.

Block, K., Carpenter, L., Morrice., H. (2021) **Family Violence Work Package Evaluation.** Report for the Victorian Department of Families, Fairness and Housing. University of Melbourne.

De Young, A., Paterson, R., March, S., Hoehn, E., Alisic, E., Cobham, V., Donovan, C., Middeldorp, C., Gash, T., & Vasileva, M. (2021). **COVID-19 Unmasked Young Children Report 2: Impact of the second wave in Australia on the mental health of young children and parents.** Queensland Centre for Perinatal and Infant Mental Health, Children’s Health Queensland Hospital and Health Service.

Gibbs, L., Cowlishaw S., Ulubasoglu, M., Tekin, E., Cesur, R., Watterston, J., Callard, N., Cobham, V., Leppold, C., Marinkovic, K., Molyneaux, R., Baur, J., Burns, A., Meagher, N., Kartal, D., Tong, L.A., Kwong, E., Wraith, R., Younger, D., Newnham, E., Cook, J., Nursey, J. (2021). **School staff support after major emergencies.** Draft Final Report to the Teachers Health Foundation.

Gibbs, L., Cowlishaw, S., Ulubasoglu, M., Tekin, E., Cesur, R., Watterston, J., Callard, N., Cobham, V., Leppold, C., Marinkovic, K., Molyneaux, R., Baur, J., Burns, A., Meagher, N., Kartal, D., Tong, L.A., Kwong, E., Wraith, R., Younger, D., Newnham, E., Cook, J., Nursey, J. (2021) **Post Bushfire Disaster School Readiness: Final Report to the Erdi Foundation.**

Gibbs, L., Gallagher, H. C., Brady, K., Leppold, C. Ireton, G., Haywood, A., Clarke, Y., Davies S, Norton, F., Brandenburg V. (2021). **Community-led Recovery: Evidence, dimensions, and supports for Community Recovery Committees.** Victoria, Australia: BNHCRC.

Gibbs L, Johnston D, Quinn P, Blake D, Campbell E, Coghlan A. (2021). **Recovery Capitals (ReCap): Navigating the Complexities of Disaster Recovery - Final Project Report.** Melbourne, Australia: University of Melbourne.

Gibbs, L., Molyneaux, R., Harms, L., Gallagher, H. C., Block, K., Richardson, J., Brandenburg, V., O’Donnell, M., Kellett, C., Quinn, P., Kosta, L., Brady, K., Ireton, G., MacDougall, C., & Bryant, R. (2021). **10 Years Beyond Bushfires Report 2020.** University of Melbourne.

Leppold, C., Cowlishaw, S., Baur, J., Burns, A., Meagher, N., Kartal, D., Nursey, J., Ulubasoglu, M., Ballard, N., Cesur, R., Tekin, E., Watterson, J., Cobham, V., Marinkovic, K., Tong, L. A., & Gibbs, L. (2021). **Student and Staff Wellbeing Surveys in Bushfire Affected Victorian Schools.** University of Melbourne & Phoenix Australia to Victorian Department of Education Training.

Leppold C, Quinn P, Block K Foliente G, Ireton G, MacDougall C, Gibbs L. **Review of the Formative Stage of the Black Summer Bushfire Recovery Program: A Case Study Evaluation Report for the Australian Red Cross.** Melbourne, Australia: University of Melbourne; September 2021.

Marinkovic Chavez, K., Allan, S., Burns, B., Debondt, K., Hall, C., Harrison, A., Obran, E., Ryan, D., & Marin, M. (2021). **Mentoring for young people affected by the Eastern Victoria Fires 2019 - 2020 and the COVID-19 pandemic in Corryong, Victoria.** Child & Community Wellbeing Unit, University of Melbourne.

Meagher, N., MacDougall, C., Marinkovic Chavez, K., Carpenter, L., Fletcher-Lartey, S., Hellard, M., Price, D.J., Gibbs, L., and Shearer, F.M. (2021). **“CARE Survey 5: COVID-19 vaccines, testing and resilience” Summary of Victorian Survey Findings.** University of Melbourne. Survey 5.

Meagher, N., MacDougall, C., Marinkovic Chavez, K., Carpenter, L., Fletcher-Lartey, S., Hellard, M., Price, D., Gibbs, L & Shearer, F. (2021). **CARE (COVID-19 Attitudes, Resilience and Epidemiology)** Report 4. University of Melbourne.

Noordam, K., Marinkovic Chavez, K., Dalfour, N., Gibbs, L., Wing, J. & Tucci, J. (2021). **ChildSpace: Trauma informed child focused community building recovery project - First Annual Report.** Australian Childhood Foundation and University of Melbourne.

Quinn P, Gibbs L, Richardson J, Blake D, Johnston D, Campbell E. **How to enhance community recovery after disasters: Hazard Note 89 [Internet].** Melbourne, Australia: University of Melbourne; 2021. Available from: <https://www.bnhcrc.com.au/hazardnotes/89>

RESOURCES

Brady, K., Gallagher, H.C., Gibbs, L., Leppold, C. (2021). **Self Assessment Tool for Community Recovery Committees.** Victoria, Australia: University of Melbourne

Brady K, Quinn P, Gibbs L. **Children and Young People Factsheet for Bushfire Recovery Victoria.** University of Melbourne, Australia; 2021.

Brady K, Quinn P, Gibbs L. **Understanding Recovery Factsheet for Bushfire Recovery Victoria.** University of Melbourne, Australia; 2021.

Kwong E, Quinn P, Ireton G. **Insurance Factsheet for Bushfire Recovery Victoria.** May 2021, University of Melbourne, Victoria, Australia.

Leppold C, Gibbs L, Quinn P. **Recovery from Multiple Disasters Factsheet for Bushfire Recovery Victoria.** April 2021, University of Melbourne, Victoria, Australia.

Leppold, C., Quinn, P. **Inequities Factsheet for Bushfire Recovery Victoria.** March 2021, University of Melbourne, Victoria, Australia.

Molyneaux R, Quinn P, Gibbs L. **Family Violence Factsheet for Bushfire Recovery Victoria.** Social University of Melbourne, Australia; 2021.

Quinn P, Gibbs L, Blake D, Campbell E, Johnston D, Ireton G. **Guide to Disaster Recovery Capitals (ReCap).** Melbourne, Australia: Bushfire and Natural Hazards Cooperative Research Centre; May 2021. Retrieved from <recoverycapitals.org.au>

Quinn P, Gibbs L, Brady K. **Mental Health Factsheet for Bushfire Recovery Victoria.** March 2021, University of Melbourne, Victoria, Australia.

Quinn P, Gibbs L, Leppold C. **Skills and Capabilities Factsheet for Bushfire Recovery Victoria.** May 2021, University of Melbourne, Victoria, Australia.

Quinn P, Leppold C, Wright W, Reeves J, Baumgartl T. **Nature and Community Recovery Factsheet for Bushfire Recovery Victoria.** March 2021, University of Melbourne, Victoria, Australia.

Quinn P, Williamson B, Gibbs L. **Recovery Capitals and Indigenous Peoples Resource.** Melbourne, Australia: Bushfire and Natural Hazards Cooperative Research Centre. April 2021. Retrieved from <recoverycapitals.org.au>

BOOKS AND BOOK CHAPTERS

Gallagher, H. C., & Zarrinabadi, N. (2021) **The opportunity to communicate: A social network approach to L2 WTC and classroom-based research.** In N. Zarrinabadi, M. Pawlak (eds.). New Perspectives on Willingness to Communicate in a Second Language, pp. 199-218. Springer.

Newnham E, Reifels L, Gibbs L. **Disaster Mental Health Research. In WHO guidance on research methods for health emergency and disaster risk management.** (Eds) Mike Clarke, Virginia Murray, Emily Chan, Ryoma Kayano, Jonathan Abrahams, and Tracey O’Sullivan. Geneva: World Health Organization; 2021. <https://apps.who.int/iris/handle/10665/345591>

Shearer, F. M., Meagher, N., Chavez, K. M., Carpenter, L., Pirrone, A., Quinn, P., Alisic, E., McCaw, J. M., MacDougall, C., Price, D. J., & Gibbs, L. (2021). **Promoting Resilience While Mitigating Disease Transmission: An Australian COVID-19 Study.** In COVID-19 Pandemic, Geospatial Information, and Community Resilience. CRC Press.

Sullivan, C., Block, K., & Vaughan, C. (2021). **The Continuum of Gender-Based Violence Across the Refugee Experience. In C. Bradbury-Jones & L. Isham** (Eds.), Understanding Gender-Based Violence: An Essential Textbook for Nurses, Healthcare Professionals and Social Workers (pp. 33–47). Springer International Publishing. https://doi.org/10.1007/978-3-030-65006-3_3

Wallerstein N, Belone L, Burgess E, Dickson E, Gibbs L, Parajon L.C., Ramgard M, Sheikhattari P, Silver G. **Community Based Participatory Research: Embracing Praxis for Transformation.** In Sage Handbook of Participatory Research, (Eds) Burns D, Howard J, and Ospina S. 2021 Thousand Oaks, California: Sage Publications; pp 653-669.

NEW GRANTS

Abeyasinghe S, Goto A, Ozaki A, Lloyd Williams A, Leppold C. Ethically researching disasters: 3.11 and beyond. Butterfield Award, the Great Britain Sasakawa Foundation. £13,960 (approximately **\$24,781**). 2022-2024.

Brady, K, Gallagher, H.C. Gibbs, L, Community led recovery: Evidence, dimensions, and supports for Community Recovery Committees. Emergency Management Victoria. **\$80,000**. 2022.

Brady, K, Gallagher, H.C. Gibbs, L, Community led recovery: Evidence, dimensions, and supports for Community Recovery Committees. Natural Hazards Research Australia. **\$350,000**. 2022.

Brady, K, Gibbs, L, Reeves, J, Foliente, G, Quinn, P, Wright, W, MacDougall, C. Promoting environmental and social resilience after disasters: Highlighting the value of local Landcare groups to community led recovery. Landcare Led Bushfire Recovery Program. **\$69,579**. 2021-2022.

Farquharson K, Block K, Bapuji H, Brown L, Chamberlain C, de Silva A, Hage G, Kelada O, Lopez L, Maddison S, Moodie N, Oishi N, Rizvi F, Monzon V. Anti-Racism Hallmark Research Initiative. University of Melbourne. **\$643,540**. 2022-2024.

Gallagher, H.C., Brady, K, Gibbs, L., Bushfire Recovery Victoria and University of Melbourne Research Partnership (Community Recovery Outcomes Study). Bushfire Recovery Victoria. **\$286,342**. 2022.

Gallagher, H. C., Koskinen, J., Poole, G., Bryant, R. A. Investigating post-disaster community resilience through network analysis. Melbourne Climate Futures Accelerator Fund. **\$49,588**. 2021-2022.

Gibbs L, Brady K, Gallagher HC, MacDougall C, Quinn P, Bowen K, Hosseini A, Kwong E. Building and Sustaining Community Support. 2021-2022 Department of Defence. **\$94,000**. 2021-2022.

Gibbs L, Gallagher, H.C., Brady, K., Quinn, P., Leppold, C. Bushfire Recovery Victoria and University of Melbourne Research Partnership **\$259,000** 2021-2022

Leppold C, Quinn P, Brady K, Gibbs L, Block K, Reifels L. Pathways for supporting communities through multiple disaster exposures. University of Melbourne Early Career Researcher Grant. **\$38,679**. 2022.

Quinn P, Marinkovic K, Vella-Brodrick D, Stanley J, Gibbs L, Block K, Leppold C. Young People’s Climate Change Capitals. Melbourne Climate Futures. **\$50,000**. 2021-2022.

Quinn P, Gibbs L, Bowen K, Gallagher C. Polis pilot: Building research capacity to understand community opinion through an innovative online platform. Researcher Development Initiative Grant. **\$24,908**. 2021-2022.



FINANCIAL SUMMARY

INCOME

Government grants & commissioned research	\$2,012,059
Competitive research funds	\$1,138,817
Courses & consultancies	\$606,366
Philanthropic funding	\$606,366
Non-government grants	\$374,219
University grants	\$362,071

Total: \$4,977,342

EXPENDITURE

Estimated final expenditure at 31 Dec 2021 - \$2,832,742
Breakdown of expenditure:
SALARY \$2,379,294
NON-SALARY \$270,948
OUTGOINGS FOR SHARED GRANTS \$182,500

CHILD AND COMMUNITY WELLBEING UNIT

Formerly the Jack Brockhoff Child Health & Wellbeing Program
Centre for Health Equity, Melbourne School of Population and Global Health, The University of Melbourne

Website

child-health.mspgh.unimelb.edu.au
beyondbushfires.org.au

This report was produced in-house by the Child and Community Wellbeing Unit and designed by Alana Pirrone.
This report is printed on recycled paper (cover 60%, inside pages 100%).

MAJOR THANKS FOR A MAJOR GIFT

We are very grateful to the major funding received from the Jack Brockhoff Foundation over a 10 year funding period from 2009-2018 that enabled the establishment and management of the Jack Brockhoff Child Health and Wellbeing Program, the predecessor to the Child and Community Wellbeing Unit. This supported the development of our program of research with a positive and enduring impact on the health and wellbeing of children and communities.

It is only possible to conduct meaningful research if we have funding partners who share our vision to make a difference. If you would like to support our next steps please contact **Professor Lisa Gibbs** at +613 8344 0920 or lgibbs@unimelb.edu.au.