

Disaster, Climate & Adversity Unit

2024 Annual Report

Centre for Mental Health & Community Wellbeing
Melbourne School of Population & Global Health
The University of Melbourne





We live and work on the unceded lands of the Wurundjeri People of the Kulin nation, and we pay respects to their Elders past and present. We acknowledge that for First Nations communities, the impacts of disaster, climate and adversity occur in contexts of historical and ongoing trauma stemming from colonisation, racism and dispossession.

We also recognise the formidable strengths of First Nations peoples and cultures, including the rich knowledges and practices of healing and caring for Country which are so powerful in reducing risk and supporting recovery. We strive to participate in genuine and respectful collaborations between Indigenous and non-Indigenous people for a more just, healthy and sustainable future together.

This artwork was created by Frances Belle Parker to reflect processes of healing after disasters. In the artist's words:

“The healing process is vastly different for everyone. It is a pivotal part of our own recovery. This artwork features five figures depicting a sense of community connectedness. They come together to help each other heal. The central figure is a symbol of calm, knowledge and healing. The remaining figures represent children as well as adults coming together to collaborate and learn from the Indigenous knowledge of healing. The ray of light represents the hope we experience following a disaster. The flowing pattern below the figures captures a sense of momentum as well as the movement within the journey of healing.”

Contents page

04	From the Director	06	About the Program
08	Evidence Mapping of Psychosocial Supports (EviMaps)	10	Climate CATCH Lab: Interdisciplinary seed and sapling research funding scheme
12	Children and young people bereaved by domestic homicide: Understanding home, relationships, and identity.	14	Media Snapshots
16	Foundations in Disaster Recovery	18	2024 Team
20	Professor Elizabeth Waters' Memorial Travel Scholarship	22	2024 Internal Awards
24	Higher Degrees	26	Publications
32	Grants	35	Financial Summary



From the Director

December 2024 marked the completion of our first full year as the Disaster, Climate and Adversity Unit. We are dealing with the major public health priorities of our time, namely the impacts of disasters and climate change on health and wellbeing, as well as more personal forms of adversity including domestic homicide and its impact on children.

In this report we present three key examples of our 2024 achievements:

- The WHO Evidence Mapping of Psychosocial Supports (EviMaPS) international study that examined the current approaches to disaster-related mental health and psychosocial support
- An impressive array of project outcomes arising from the Climate CATCH Lab rounds of seed and sapling funding
- New insights from a project exploring the experiences and perspectives of children and young people bereaved by domestic homicide - understanding home, relationships, and identity.

We also provide information about the highly successful Foundations in Disaster Recovery short course and provide an update on our team and research outputs.

The secret to our success in conducting high impact research is no secret - it is thanks to our close partnerships with people who live, work and govern in our fields of study.

Professor Lisa Gibbs

DIRECTOR, DISASTERS,
CLIMATE AND ADVERSITY UNIT

“ *The death of a parent through domestic homicide is a profound loss for surviving children affecting all aspects of their lives. This project explores the perspectives of young people and adults with this experience to help improve support in the future.* ”

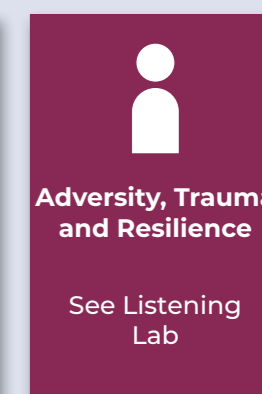


About the program

Our vision is to help create pathways towards optimum health and wellbeing for those at risk from or impacted by disaster, climate and adversity.

We work with policy makers, service providers, practitioners, communities and people with lived experience to build new evidence and convert that into practical resources and tools that increase capacity to implement health promoting systems, services and strategies.

We achieve this through our three intersecting streams of research:



Evidence Mapping of Psychosocial Supports (EviMaPS)



While people are remarkably resilient when facing the aftermath of disasters, many face long-term mental health problems especially if they are exposed to more than one disaster. Finding out about the different ways people are being supported in diverse sociocultural contexts and comparing that to international guidelines and growing evidence about what makes a difference, helps to build knowledge and global capacity.

About the Project

The WHO Centre for Health Development (WHO Kobe Centre – WKC) commissioned the Evidence Mapping of Psychosocial Supports (EviMaPS) study to identify disaster-related mental health and psychosocial support (MHPSS) policies and programs and examine the evidence for their impact on mental health. The project also highlighted gaps in evidence and provided recommendations for global policy, practice and guidance.

Key findings from this study include:

EviMaPS showed that disaster related MHPSS programs are being implemented around the world in different formats, by a range of providers, in various settings and for different target groups.

The majority of MHPSS programs are focused on implementation after the hazard event.

While the majority of MHPSS programs had not been evaluated, they were often underpinned by a range of theoretical approaches, frameworks, and guidelines (e.g. the IASC guidelines for MHPSS in Emergencies, 2007).

MHPSS program evaluations typically reported beneficial mental health outcomes, albeit with varying levels of research rigour in the evaluation study design.

Evidence gaps remain in evaluation of the long term benefits of MHPSS policies, pre-disaster MHPSS programs and their impacts on high risk groups.

Phase 1 - practice mapping

9 MHPSS **policies**

92 MHPSS **programs**

being implemented in over **17 countries** and regions.

Phase 2 - scoping review

4 **reviews**

33 **primary research articles**

about programs evaluated in **13 countries** and regions.

This work examined the alignment of existing MHPSS programs with the **IASC intervention pyramid & WHO Health Emergency and Disaster Risk Management Framework.**

Knowledge Translation and Impact

An announcement of findings and a project brief has been shared by WHO and further circulated through international disaster networks. They are also being disseminated through conference presentations and sharing of companion briefs targeting relevant a) government agencies and service providers, and b) researchers and funding bodies.

Strategic Partners

Australia

- **University of Melbourne:** Prof Lisa Gibbs, Robyn Molyneaux, Dr Claire Leppold, Dr Katitza Marinkovic Chavez, Dr Lennart Reifels
- **Phoenix Australia - Centre for Posttraumatic Mental Health:** Alexandra Howard, Jane Nursey
- **Monash University:** Associate Professor Jonathan Abrahams
- **Curtin University:** Associate Professor Elizabeth Newnham

Japan

- **WHO Kobe:** Dr Ryoma Kayano, Ryo Yokoe
- **University of Osaka:** Professor Junko Otani
- **Okayama University:** Professor Nahoko Harada

Italy

- **Italian Society of Emergency Psychology Social Support - Emilia Romagna (SIPEM SoS Emilia Romagna ODV):** Dr Anna Sozzi, Alex Iacconi
- **University of Milan:** Dr Paola Cavaliere

USA

- **National Centre for PTSD:** Dr Patricia Watson

Funding Partners

WHO Centre for Health Development (WHO Kobe Centre – WKC)

Key Publications

A research article reporting on the main findings has been prepared for submission early 2025.

More information

[EviMaPS Website](#)

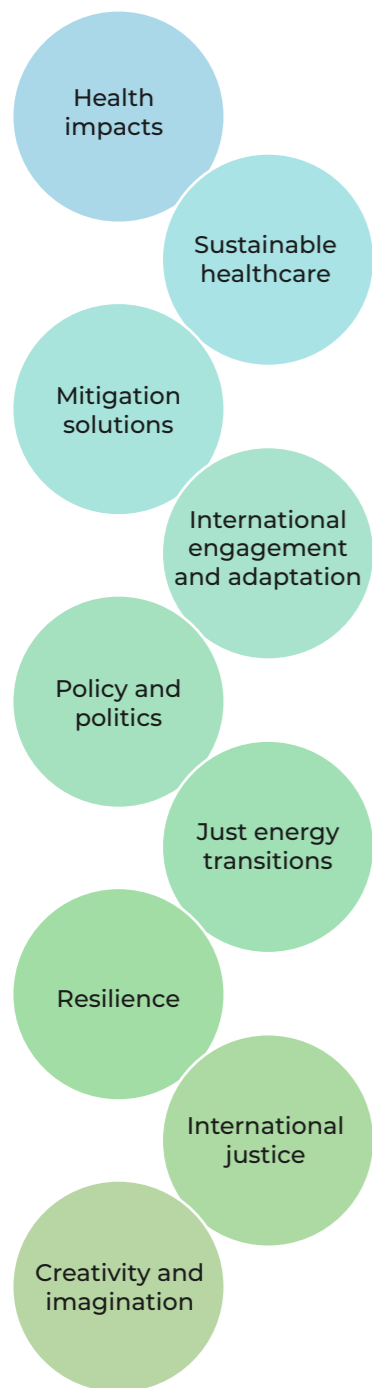
[WHO website](#)



Climate CATCH Lab: Interdisciplinary seed and sapling research funding scheme



The Climate Collaborative Action for Transformative Change in Health and Healthcare (CATCH) Lab supports interdisciplinary and multi-sectoral research collaborations to enhance knowledge, practice, awareness and advocacy at the nexus of climate change and health.



About the Project

The Climate CATCH Lab ran an inaugural 'seed' funding round (2023-2024) to empower University of Melbourne researchers in developing targeted, practical solutions to health, wellbeing and climate challenges. Seven innovative projects co-led by early to mid-career researchers and senior academics were supported.

Projects tackled diverse issues, including:

- a pilot of **reusable surgical gowns** in Melbourne hospitals;
- adapting the interactive Climate Superpowers platform for classrooms;
- a Futures Collective network to bring together climate and sustainability **researchers** with **emergency services** and climate-impacted **communities**;
- analysing the impact of climate-related disasters on **mental health and sleep** and **migrant health**; and
- developing resources to address overlapping infectious disease outbreaks and weather-related disasters, which are projected to increase as climate change intensifies.

Building on this success, we extended support to four sapling projects (2024-2025) to help translate research into real-world policy and practice. Established initiatives with strong potential for scale-up and alignment to Climate CATCH Lab research streams were prioritised.

Ongoing projects include:

- implementation of an **Environmental Sustainability Toolkit** with Mercy Health, building on a 'seed' funded pilot with the Northern Territory Department of Health.;
- a policy toolkit for Victorian government stakeholders working at the intersection of **infectious diseases and disasters**;
- an investigation of **teacher wellbeing** in relation to climate change; and
- a national **anti-idling campaign** to address the health-related impacts of air pollution on children.

Knowledge Translation and Impact

All projects have a strong emphasis on knowledge translation, and have disseminated results through various public channels including webinars, impact case studies, classroom resources, a Hospital Sustainability Toolkit, and policy briefs. Projects have since gone on to receive significant recognition, including the Reusable gowns project being shortlisted for a 2024 Victorian Public Healthcare Award (McGain & Clarke). Several research leads have received additional funding and stakeholder requests to expand implementation of pilot activities in other settings.

Strategic Partners

Healthcare providers:

- Royal Darwin Hospital, Palmerston Regional Hospital and Alice Springs Hospital
- Peter MacCallum Cancer Centre
- Mercy Health

Government agencies:

- Northern Territory Health
- Victorian Government
- Emergency Management Victoria
- Department of Health
- Agriculture Victoria
- Environmental Protection Agency
- Department of Education
- Loddon Mallee Public Health Unit at Bendigo Health

Other stakeholders:

- Australian Citizen Science Association Victoria (ACSA-VIC)
- Climate and Health Alliance
- Doctors for the Environment Australia
- Breathe Melbourne (Deakin University)
- Pacific Climate Change Centre

Funding Partners

University of Melbourne Faculty of Medicine, Dentistry and Health Sciences

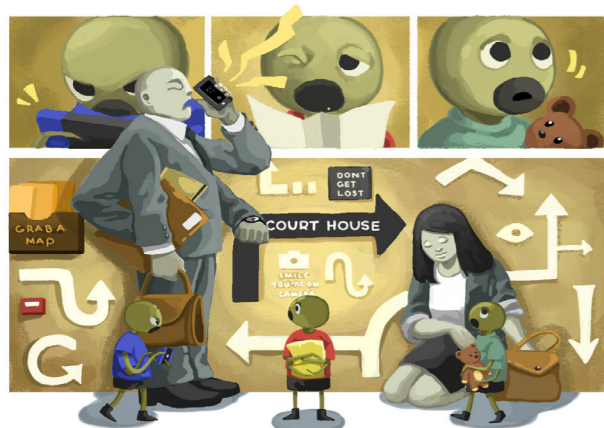
Key publications

Overlapping Infectious Diseases and Weather-related Disasters research report and planning scenarios (Leppold & Taiaroa). go.unimelb.edu.au/vs8p

A report and expert recommendations for measuring post-disaster sleep and mental health outcomes for researchers and practitioners (Molyneux). go.unimelb.edu.au/5s8p

Protecting our Health: Implementing an anti-idling campaign in Australia, policy brief (Walter, Morrice, Workman, Robinson & Patrick). go.unimelb.edu.au/9bk8

Children and young people bereaved by domestic homicide: Understanding home, relationships, and identity.



The death of a parent through domestic homicide is a profound loss for surviving children affecting all aspects of their lives. This project explores the perspectives of young people and adults with this experience to help improve support in the future to better support future victim survivors.

About the Project

This qualitative project aimed to better understand the living arrangements, peer and family relationships, and identity development of people who have lost a parent through domestic homicide (i.e., having a parent killed by a current or former intimate partner). We conducted in-depth interviews with three groups of participants to explore these topics: (a) people with lived experience of bereavement through domestic homicide during childhood, (b) current or former caregivers of children with lived experience, and (c) professionals who have experience working with children with lived experience (e.g., mental health practitioners, education workers, policy makers).

Knowledge Translation and Impact

Our team published a report toward the end of 2023 presenting key findings from this project. We discuss issues such as lack of available data and the inadequacy of Australia's current approach to supporting bereaved children and their families. Our results demonstrated (a) lifelong experiences of stigma and silencing in surviving children, (b) a lack of child involvement in decision making or child-centred approaches, (c) fundamentally altered concepts of 'home' and lack of support for new caregivers, (d) inconsistent or missed opportunity for trauma-informed school-based support, and (e) unavailable or unhelpful support through existing service systems.

Artwork by Thu Huong Nguyen (Abigail)

Knowledge Translation and Impact cont

We published several peer reviewed articles in 2024, including two that built on insights from 12 participants with lived experience of bereavement. The first of these focussed on identity. We found that participants' loss triggered identification with difference and a strong sense of feeling not normal. Feelings of isolation and alienation followed this and were sometimes exacerbated by a lack of sense of belonging in new family environments and negative experiences in support services.

Participants' sense of connection to their parents played an important role in their self-understanding. Many participants maintained an active connection to their victim parents, which could be a helpful means of mitigating identity-based distress related to identifying with their perpetrator parent (e.g., fear of inheriting their violence).

The second of these articles looked at the taboo and stigma surviving young people face and the active role they can play in rebelling against, and reclaiming, these narratives. Participants were confronted by these imposed narratives from different sources (e.g., peers, family, practitioners) about the homicide, their parents, and their own identities, fostering loneliness and a sense of being silenced and without power. In resisting and taking control of their own stories (a process we named "crafting subverses"), participants could make sense of their experiences and themselves in the pursuit of personal healing and social justice.

Funding Partners

Australian Research Council Future Fellowship scheme
University of Melbourne Establishment grant
University of Melbourne Dame Kate Campbell Fellowship.

Collaborators

This project has engaged extensively with colleagues in academic, clinical, government, law enforcement, health, education and services contexts. Examples include the University of Edinburgh, the Australian Childhood Foundation and the Victorian Centre for Excellence in Child and Family Welfare.

Key Publications

Alisic, E., Barrett, A., Conroy, R., Devaney, J., Eastwood, O., Frederick, J., ... & Vasileva, M. (2023). Children and young people bereaved by domestic homicide: A focus on Australia.

Eastwood, O., Conroy, R., Marinkovic Chavez, K., Joy, K., Devaney, J., Kurdi, Z., ... & Alisic, E. (2024). "That weird kid without parents": a qualitative analysis of identity following bereavement due to parental intimate partner homicide in Australia. *Australian Psychologist*, 1-17.

Marinkovic Chavez, K., Joy, K., Frederick, J., Eastwood, O., Morrice, H., Sakthiakumaran, A., Vasileva, M., Kurdi, Z., Houghton, C., Devaney, J., Humphreys, C. & Alisic, E. (In press). *Crafting Subverses: A narrative analysis of the experience of losing a parent through intimate partner homicide.* *Journal of Family Violence.*

Media snapshots

Professor **Eva Alisic** was interviewed by Channel 9 on her research about **Children and Young People Bereaved by Domestic Homicide**.

“The caregivers are grandparents or other family members who are going through their own grief. It's really **tough for them to support children** in these tough circumstances.”



Professor **Eva Alisic** and Beverley (who advises on the Domestic Homicide project based on her lived experience) were interviewed on the ABC Conversation Hour.



A powerful new documentary about **Kathryn Joy's** life experiences, by Fringe Dweller Films, was launched at ACMI late August and then released on STAN.

“KillJoy offers the unique view of **family violence from the perspective of a child**. Kathryn Joy, whose father killed their mother when they were three months old, embarks on a journey to uncover their mother's buried story.”



Dr Katitza Marinkovic Chavez represented the Domestic Homicide team in a media briefing on domestic violence organised by the Australian Science Media Centre (ASM).





Foundations in Disaster Recovery

About the course

This short course has been specifically designed for practitioners, volunteers and community members who are (or will be) working in post-disaster settings. The course was developed by leading disaster recovery researchers in the Disaster, Climate and Adversity Unit and is delivered with contributions from internal and external collaborators. It combines the rigour of academic research with a focus on practical application.

Over the last two decades there have been significant advances in the field of disaster recovery and resilience research. As disasters increase in frequency and intensity, disaster recovery practitioners are increasingly working in complex environments, often with limited access to training and professional development.

This course is in a flexible format across five weeks with a combination of online and (optional) in-person learning. The content provides a foundation for disaster recovery practitioners, volunteers and community leaders who want to deepen their understanding of disaster recovery, how to consider disaster related impacts and how to access evidence-based materials to support practice.

Throughout this course there are opportunities for participants to engage with contemporary disaster recovery research and work with others engaged in disaster recovery from a range of perspectives.

In 2024, the National Emergency Management Agency made the course a mandatory training requirement for all employees in their Response branch.

“ My thanks to the tutors, presenters and my peers who were on the course. It was a **valuable and inspiring** step in my journey into the world of **Community-Led Resilience and Recovery**.”

“ This was an absolutely fantastic opportunity to **gain valuable insights**, connect with **like-minded professionals**, and walk away with **practical knowledge** that can be applied to your work immediately.”

“ Making what can be hard and complex, **simple and assimilable**.”



269

people to date have completed this short course.



Prof Eva Alisic



Nathaniel Barker



Prof Kathryn Bowen



Oliver Eastwood



Dr Colin Gallagher



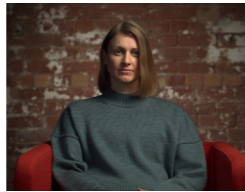
Prof Lisa Gibbs



April Harrison



Jonathan Janua



Kathryn Joy



Kristine Jover



Dr Claire Leppold



Dr Katitza Marinkovic Chavez



Sarah Medcalf



Robyn Molyneaux



Elise Moo



Hannah Morrice



Sam Netherclift



Sunny Nguyen



Prof Junko Otani



Dr Rebecca Patrick



Alana Pirrone



Phoebe Quinn



Ashwini Sakthiakumaran



Urvi Thanekar



Dr Belle Workman

2024 Team

Professor Lisa Gibbs is the Director of the Disaster, Climate and Adversity Unit and leads the Disaster Resilience & Recovery stream of the Unit – i.e. the Beyond Disasters program. Professor Kathryn Bowen leads the Climate Change and Health stream – i.e. the Climate CATCH Lab, and Professor Eva Alisic leads the Adversity, Trauma and Resilience stream – i.e. the Listening Lab.

The Disaster, Climate and Adversity Unit is part of the Centre for Mental Health and Community Wellbeing, led by Professor Jane Pirkis. Situated within the Melbourne School of Population and Global Health which was under the leadership of Professor Nancy Baxter in 2024. The Unit also receives excellent ongoing professional support from the Centre and School finance and administration teams, in particular, Michelle Kelsey, Tracey Mayhew and Rosslyn Ball.

HONORARY

Sudeepa Abeysinghe
University of Edinburgh

Dr Rebecca Armstrong
National Disability Insurance Agency

Dr Kate Brady
UNSW

Andrew Coghlan
Australian Red Cross

Professor Kristie L. Ebi
University of Washington

Dr John Frederick

Dr Ashrafalsadat Hosseini
University of Melbourne Health Service

Professor Colin MacDougall
Flinders University

Vanora Mulvenna
Victorian Department of Health

Jane Nursey
Phoenix Australia

Dr Kerryn O'Rourke,
Charles Darwin University

John Richardson
Australian Institute for Disaster Resilience

Dr Elena Swift
Centre for Children's Health Research, West Moreton HHS, Queensland Health

Mia Urbano
Alinea International

David Younger
Clinical & Consultant Psychologist

VISITING FELLOW

Prof Junko Otani
University of Osaka

Professor Elizabeth Waters' Memorial Travel Scholarship

This Scholarship was established by friends and family of Professor Elizabeth Waters in recognition of her remarkable contribution to public health internationally and to child public health in particular. Liz travelled widely and due to her warmth, intellect and vision she was able to capitalise on those travel opportunities to build international networks and to achieve the highest standards in evidence, engagement and outcomes. This Scholarship is intended to continue her legacy. All staff, Higher Degree candidates, partners and collaborators are eligible to apply, provided the proposed international travel activity will promote research relating to child health and wellbeing and aligns with the work of Melbourne School of Population and Global Health, University of Melbourne.

2024 Recipient: Fiona Fowler



Fiona Fowler is a social worker based in Mpartnwe (Alice Springs) and also a PhD Candidate in Onemda Indigenous Studies Unit in the Melbourne School of Population and Global Health. Fiona will receive a Travel Scholarship of approximately \$6,300 to travel to Germany for the 31st HTLV European Research Network Conference to progress her work on to focus on mother-to-child transmission of a blood-borne virus that causes fatal diseases.

2023 Travel Report: Dr Ash Hosseini

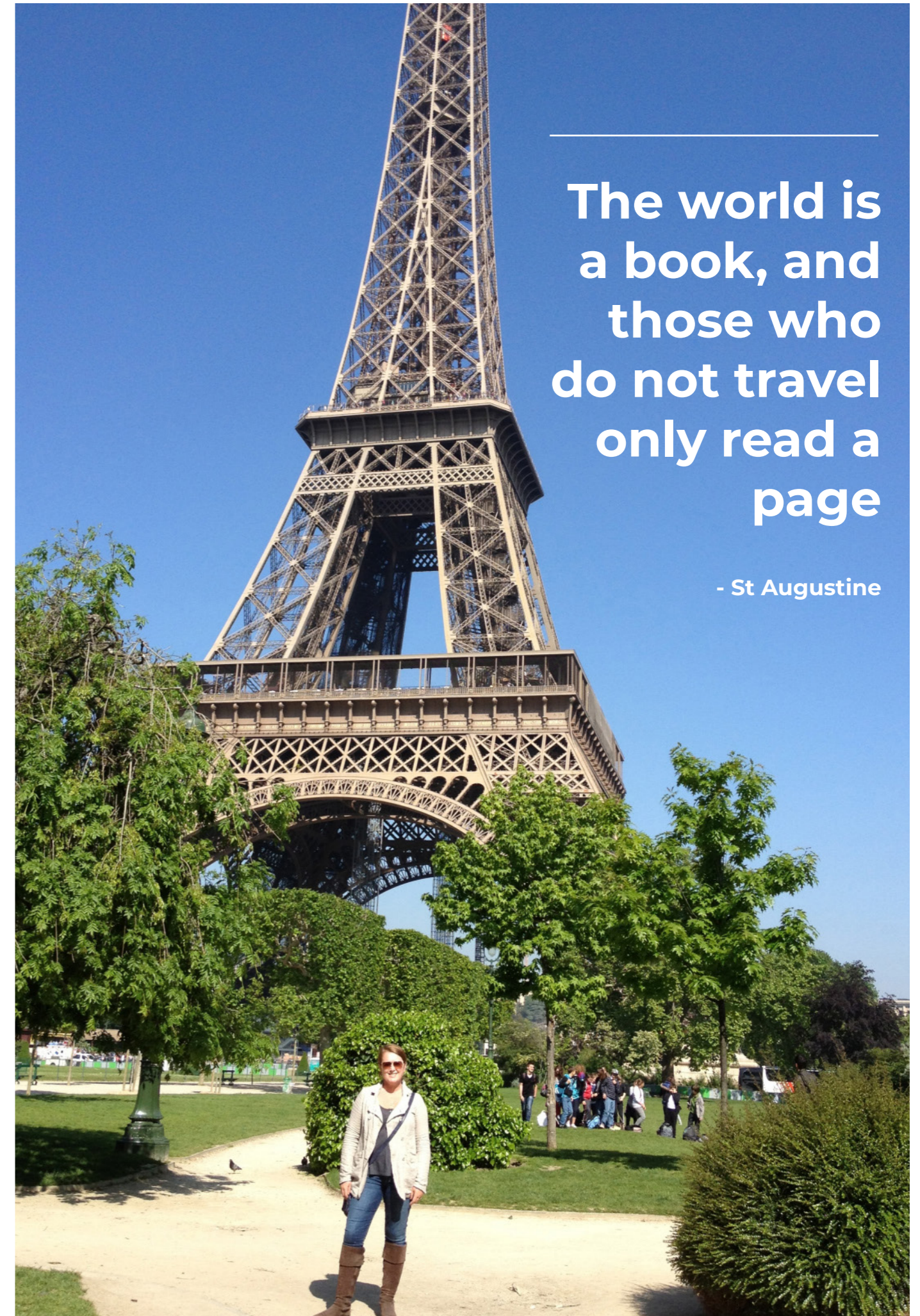


Reflections from the 25th International Psycho-Oncology Society (IPOS) World Congress of Psycho-oncology 2024.

It was truly an occasion for knowledge exchange and collaboration by connecting with other researchers who exchange dialogue about improving cancer care on an international and local levels and sharing strategies to address psychosocial issues to all aspects of cancer care with an emphasis on "what we can learn from each other".

It was great to understand that there is a global consideration in the importance of peer support programs and a highlight of learning from individuals with living and/or lived experience who can make a difference in cancer care.

Full reports are available on our website - <http://go.unimelb.edu.au/7adr>



The world is
a book, and
those who
do not travel
only read a
page

- St Augustine

2024 Internal Awards

Disaster, Climate and Adversity Unit Awards

Research Excellence:
Robyn Molyneaux



For sustained high quality research, analysis and reporting across multiple research projects

Research Excellence:
Elise Moo



For her work on the Global Environment Facility (GEF) terminal evaluation of the 'Building resilience of health systems in Asian Least Developed Countries to climate change' project

Coralie Mathews in Memoriam Award:
Hannah Morrice



For strong community engagement and accessible knowledge translation, specifically for her commitment to policy impact and knowledge translation across multiple projects including the Domestic Homicide project, Idle Off, and Advocacy and Policy Workshop

Team Award:
Disaster Recovery Short Course



Claire Leppold and Kate Brady for the successful development of the highly regarded Foundations in Disaster Recovery short course.



Melbourne School of Population and Global Health Awards

MSPGH 2024 Engagement Impact Award:
Climate CATCH Lab



For outstanding engagement contributions to climate change and health research

MSPGH Mentor Achievement Award:
Dr Rebecca Patrick



For outstanding contributions in the formal and informal mentoring of students and colleagues.

Higher degrees

PhD Students

CHRISTOPHER BOYER

Heatwave early warning systems – challenges for implementation in Sub-Saharan Africa (2021-2025).

Supervisors: Prof Kris Ebi, Prof Kathryn Bowen, Prof Jeremy Hess

National Institutes of Health (US). Enrolled through the University of Washington, US.

MEG CHIN

When a child dies from a life-threatening condition: Hearing the voices of bereaved siblings (2017-2025).

Supervisors: Prof Louise Harms, Prof Lisa Gibbs.

JONATHAN JANUAR

Missing data mechanisms in covert networks (2021-2025).

Supervisors: Dr Johan Koskinen, Dr Colin Gallagher, Prof Yoshi Kashima.

ANNA KENNEDY-BORISSOW

Creativity, recovery, and resilience: How the arts contribute to psychosocial recovery and resilience in disaster-affected communities (2022-2025).

Supervisors: Dr Caitlin Vincent, Dr Guy Morrow, Dr Claire Leppard and Dr Kate Brady.

DOMINICA MEADE

Gender, volunteering and disasters (2023-2026).

Supervisors: Dr Brendan Churchill, Professor Jo Barraket, Dr Claire Leppard.

SHANTI NARAYANASAMY

Identifying critical knowledge gaps in our understanding of structural barriers to health in Victoria through community perspectives during the COVID-19 pandemic to change future practice (2023-2026).

Supervisors: Professor Margaret Hellard, Professor Lisa Gibbs, Assoc Prof Alisa Pedrana, Assoc Prof Katherine Gibney

ADELLE MANSOUR

Creating climate-resilient and healthy housing: what is the role of citizen science? (2023-2026)

Supervisors: Prof Rebecca Bentley, Prof Kathryn Bowen, Dr Samantha Rowbotham.

PHOEBE QUINN

Crowdsourcing consensus for climate and disaster resilience: An exploration of the use of civic technology for agenda-setting at scale (2022-2025).

Supervisors: Prof Lisa Gibbs, Prof Kathryn Bowen, Prof Nicole Curato.

SOPHIE ROBINSON

Governance to enable Climate Resilient Development of Healthcare systems (2021-2024).

Supervisors: Kathryn Bowen; Michele Barnes; Glenn Hoetker.

ALEX TANFIELD

The impact on and changing nature of social capital in response to multiple disasters (2023-2026)

Supervisors: Professor Jacki Schirmer, Professor Lisa Gibbs

Enrolled through University of Canberra.

Supported by Department of Education Research Training Program stipend and a scholarship from Natural Hazards Research Australia.

DANA YOUNG

Sports participation and social capital development for migrant women and adolescent girls (2018-2025).

Supervisors: A/Prof Karen Block, Prof Lisa Gibbs.

National Health and Medical Research Council Postgraduate Scholarship.

COMPLETED

NABREESA MURPHY

Young people's sexual and reproductive health and rights in the Pacific in times of climate change-related disasters (2021-2024)

Supervisors: A/Prof Meghan Bohren, A/Prof Peter Azzopardi, Prof Kathryn Bowen.

Master of Public Health

NATHANIEL BARKER

Project title: Mental health and well-being of teachers in climate change education: A rapid (scoping) review

Supervisors: Dr Rebecca Patrick, Dr Katitza Marinkovic Chavez, Phoebe Quinn

SIQI CHEN

Secondary analysis of social capital indicators in general social surveys.

Supervisors: Dr Colin Callagher, Robyn Molyneaux

ISABEL CHUNG

Professionals' accounts of working with children and their families in the aftermath of fatal family violence.

Supervisors: Dr Eva Alisic and Dr Kati Marinkovic

HERYANTO MARDI

Air pollution in megacities: A case study of Indonesia.

Supervisors: Dr Belle Workman, Prof Kathryn Bowen.

SARAH MEDCALF

What strengths and resources do young people between the ages of 12 - 25 years living in Victoria draw upon when navigating the climate crisis?

Supervisors: Phoebe Quinn, Dr Katitza Marinkovic Chavez.

HEIDY NATALIA NIVAAN

Climate Change and Human Health: Review of how health is represented in National Adaptation Plans (NAPs).

Supervisors: Dr Rebecca Patrick, Prof Kathryn Bowen.

CHRISTINA PELOSI-THORPE

Sustainable healthcare at Western Health - evaluation case study.

Supervisors: Dr Rebecca Patrick, Forbes McGain.

SARAH PHILLIPS

Literature Review - Leadership and Governance in Sustainable Healthcare.

Supervisors: Dr Rebecca Patrick, Prof Eugenie Kayak.

ELISA QUIJANO

How can young people's experience of climate change events inform Victorian health policy?

Supervisors: Dr Katitza Marinkovic Chavez, Dr Anabelle Workman, Phoebe Quinn.

SOPHIA SAMUEL

Fossil fuel companies - commercial determinants of health and wellbeing.

Supervisors: Prof Kathryn Bowen, Jenn Lacey-Nicholls.

CHARLOTTE WIRTZ

Loss and damage - relevance to human health and wellbeing

Supervisors: Prof Kathryn Bowen, Janine Felson.

MPH COMPLETIONS

ALEXANDRA HOWARD

Potential barriers and opportunities for Australia-wide implementation of the National Disaster Mental Health and Wellbeing Framework.

Supervisors: Dr Claire Leppard, A/Prof Helen Jordan, Dr Kate Brady.

RAMZI SAAD

How do national policies in Pacific Small Island Developing States address the association between communicable diseases and climate change? A Case study analysis of Solomon Islands and Fiji.

Supervisors: Dr Belle Workman, Alexei Trundle.

Master of Science (Epidemiology)

PENGJIE ZHANG

Explore psychosocial interventions designed to address anxiety and depression in young adults with parental cancer.

Supervisors: Dr Ash Hosseini

Master of Environment

SAMUEL NETHERCLIFT

The health co-benefits of ocean-based climate action

Supervisors: Dr Ellycia Harrould-Kolieb, Dr Belle Workman

Publications

Journal publications

1. Brady K, Gallagher H C, Molyneaux R, Sanderson D, Heffernan T, Gibbs L. Improving long-term disaster recovery research in Australia through boosting dataset comparability. *Australian Journal of Emergency Management*. 2024. 39(2), 79-80.
2. Brady K, Reeves J, Wright W, Foliente G, Molyneaux R & Gibbs L. (Accepted November 2024). Experiences of members of community based, environmentally focused groups following the 2019-2020 bushfires. *Australian Journal of Emergency Management*.
3. Buckle N, O'Neill A, Sweeney A, McNulty S, Bracken S, Awan A, Sinnott S, Gibbs L, Larkin P, Kroll T and Somanadhan S (2024). The use of art as a creative research method to understand psychosocial care needs for children with rare diseases. *Therapeutic Advances in Rare Disease*. 2024;5. doi:[10.1177/26330040241265449](https://doi.org/10.1177/26330040241265449).
4. Buckle N, Rogers Y, O'Toole D, McNulty S, Kroll T, Gibbs L & Somanadhan S (2024). A qualitative exploration of children's lives with rare diseases. *Child: Care, Health and Development*, 50(4), e13294. <https://doi.org/10.1111/cch.13294>.
5. Dunbar N, Forrester M, Patrick R, et al. Balancing Economic and Social Cost and Environmental Sustainability: A Case Study of Reusable Isolation Gowns. *Appl Health Econ Health Policy* (2024). <https://doi.org/10.1007/s40258-024-00921-0>.
6. Eastwood O, Conroy R, Joy K, Chavez KM, Devaney J, Frederick J, Kurdi Z & Alisic E. (2024). "That Weird Kid Without Parents": A Qualitative Analysis of Identity Following Bereavement due to Parental Intimate Partner Homicide in Australia. *Australian Psychologist*. 60:2, 177-193. DOI:[10.1080/00050067.2024.2378144](https://doi.org/10.1080/00050067.2024.2378144).
7. Ebi KL, Bowen K, Haines A et al. Estimating the total effect of anthropogenic climate change on human health and wellbeing. *Nat Med* (2024). <https://doi.org/10.1038/s41591-024-03051-1>.
8. Eichholtzer AC, Driscoll DA, Patrick R, Galletta L & Lawson J (2024). The co-benefits of biodiversity citizen science for well-being and nature relatedness. *Applied Psychology: Health and Well-Being*, 16(2), 515-536.
9. Flies EJ, Pryor A, Henderson-Wilson C, Turner M, Roydhouse J, Patrick R, ... & Neil A (2024). Bridging the evidence gap: A review and research protocol for outdoor mental health therapies for young Australians. *Journal of Outdoor and Environmental Education*, 27(1), 37-56.
10. Frederick J, Alisic E, Devaney J, Marinkovic Chavez K, Kurdi Z, Eastwood O, Conroy R, Vasileva M (2024). School-based support for children bereaved due to parental intimate partner homicide. *Pastoral Care in Education*. 1-20. <https://doi.org/10.1080/02643944.2024.2421366>.
11. Gomersall A, Alisic E, Devaney J, Humphreys C, Stanley N, Trickey D & Howarth E (2024). Professional support for children bereaved by domestic homicide in the UK. *Journal of Family Violence*, 1-13.
12. Green MP, Shearer C, Patrick R, Kabiri S, Rivers N, Nixon B (2024). The perils of poly- and perfluorinated chemicals on the reproductive health of humans, livestock, and wildlife. *Reproduction, Fertility and Development* 36, D24034. <https://doi.org/10.1071/RD24034>.
13. Gunasiri H, Patrick R, Garad R, Enticott J, Meadows G & Snell T (2024). Coping with the Mental Health Impacts of Climate Change: A Green Script for Sustainable Action. *Sustainability*, 16(3), 1022.
14. Harms L, Molyneaux R, Nguyen H, Pope D, Block K, Gallagher HC, Kavanagh SA, Quinn P, O'Donnell M & Gibbs L (2024). Individual and community experiences of posttraumatic growth after disaster: 10 years after the Australian Black Saturday bushfires. *Psychological Trauma: Theory, Research, Practice, and Policy*. 16(2), 303-311. doi:10.1037/tra0001500.
15. Kellett C, Gibbs L, Harms L. Anger Following the Victorian Black Saturday Bushfires: Implications for Postdisaster Service Provision. *Australian Social Work*. 2024. 77(2), 243-255. doi:[10.1080/0312407X.2023.2172685](https://doi.org/10.1080/0312407X.2023.2172685).
16. Kurdi Z, Devaney J, Houghton C, Eastwood O, Frederick J, Joy K, Marinkovic-Chavez K, Sakthiakumaran A and Alisic E (2024). Applying a socio-ecological model to understanding the needs of children and young people bereaved by intimate partner homicide across their life course. *Journal of Family Violence*. <https://doi.org/10.1007/s10896-024-00721-z>.





17. Learmonth Y C, Bhojroo R, Gibbs L, Kermode A, Walker D, Marck C H. Multiple Sclerosis and COVID-19: Health and healthcare access, health information and consumer co-created strategies for future access at times of crisis. *Multiple Sclerosis and Related Disorders*. 2024 Vol 87, 105691. doi:<https://doi.org/10.1016/j.msard.2024.105691>
18. Leppold C, Patrick R, Quinn P, Marinkovic Chavez K, Gibbs L (2024). Key concepts for experimenting with AI to address the challenges of disasters and climate change. *Australian Journal of Emergency Management*. 39(4).
19. Leppold C, Reifels L (2024). Mental health in the context of multiple exposures to disasters. In: Williams R, Kemp V, Porter K, Healing T, Drury J (eds). *Major Incidents, Pandemics and Mental Health: The Psychosocial Aspects of Health Emergencies, Incidents, Disasters and Disease Outbreaks*. Cambridge: Cambridge University Press.
20. Lowe M, Bell S, Ferguson P, Morley M, Morrice H, Foster S (2024). Building back healthier? The transformative potential and reality of city planning responses to COVID-19 in Melbourne, Australia. *Cities*, Volume 155. <https://doi.org/10.1016/j.cities.2024.105479>.
21. Marck CH, Galna B, van der Mei IAF, Laslett LL, Tan J, Gibbs L, Kermode AG, Walker DI, Learmonth YC (2024). Crisis preparation for people with multiple sclerosis in Australia: A cross-sectional survey of needs. *International Journal of Disaster Risk Reduction*. 109: p. 104586. <https://doi.org/10.1016/j.ijdr.2024.104586>
22. Marinkovick Chavez K, Joy K, Frederick J, Eastwood O, Morrice H, Sakthiakumaran A, Vasileva M, Kurdi Z, Houghton C, Devaney J, Humphreys C & Alisic E (2024). Crafting Subverses: A narrative analysis of the experience of losing a parent through intimate partner homicide. *Journal of Family Violence*. <https://doi.org/10.1007/s10896-024-00760-6>.
23. Marinkovic Chavez K, Quinn P, Gibbs L, Block K, Leppold C, Stanley J & Vella-Brodrick D (2023). Growing up in Victoria, Australia, in the midst of the climate emergency. *International Journal of Behavioral Development*, 2024. 48(2), 125-131. doi:[10.1177/01650254231205239](https://doi.org/10.1177/01650254231205239).
24. McGuinness MB, Moo E, Varga B, Dodson S, Lansingh VC, Resnikoff S, ... Congdon N (2024). The Better Operative Outcomes Software Tool (BOOST) Prospective Study: Improving the Quality of Cataract Surgery Outcomes in Low-Resource Settings. *Ophthalmic Epidemiology*, 32(1), 76–86. <https://doi.org/10.1080/09286586.2024.2336518>.
25. Merner B, Hill SJ, Saich F, Virgona A, Jin D, Pedrana A, Keren C, Kar Yee Chung R, Osborne D, Wilkinson AL, Coelho A, Gibbs L, Gibney KB, Hellard M, Lusher D, Ryan R (2024). What Lies Beneath? The Role of Community Engagement in Translating COVID-19 Research Findings to Policymakers *International Journal of Health Policy and Management*. 13:8249.
26. Michelle A, Maheen H, Bowen KJ (2024). Mental health impacts from repeated climate disasters: an Australian longitudinal analysis. *The Lancet (Western Pacific)*. 47: 101087
27. Minx JC, Hilaire J, Müller-Hansen F, Nemet G, Diluio F, Andrew RM, Ayas C, Bauer N, Bi SL, Clarke L, Creutzig F, Cui RY, Jotzo F, Kalkuhl M, Lamb WF, Löschel A, Manych N, Meinshausen M, Oei P.-Y, ... Workman A, Wiseman J (2024). Coal transitions—part 2: phase-out dynamics in global long-term mitigation scenarios. *Environmental Research Letters*, 19(3), 033002. <https://doi.org/10.1088/1748-9326/ad24cd>.
28. Mitchell A, Maheen H and Bowen K. Mental health impacts from repeated climate disasters: an Australian longitudinal analysis. *The Lancet Regional Health -Western Pacific*. 2024;47: 101087
29. Molyneaux R, Mirembe E, Leicester S, Schley C & Alisic E (2024). Digital Disclosures: Exploring the role of online mental health services in supporting young people who disclose violence or maltreatment. *Child Protection and Practice*.
30. Ozaki A, Murakami M, Leppold C (2024). Wildfire exposure and lung cancer survival. *JAMA Oncology (online first)* doi:10.1001/jamaoncol.2023.6123
31. Pacella B, Cowlshaw S, Gibbs L, Bryant R, Brady K, Gallagher HC, Molyneaux R, Gibson K, Block K, Harms L, Forbes D, O'Donnell M. Trajectory of adjustment difficulties following disaster: 10-year longitudinal cohort study. *BJPsychOpen* 2024. 10(2), e57. doi:10.1192/bjo.2024.3.

A photograph of the entrance to University House, featuring a large arched doorway with a brick facade. The words "UNIVERSITY HOUSE" are displayed in large, gold, serif capital letters above the doorway. Green ivy is visible on the left side of the brick wall.

UNIVERSITY HOUSE

32. Patrick R, Bruges N, Gunasiri H, Wang Y, Henderson-Wilson C. Healthy Me, Healthy Planet: Evaluation of a pilot planetary health library program. *Health Promot J Austral*. 2024. <https://doi.org/10.1002/hpja.882>.
33. Patrick R, Forrester M, Thanekar U, Gunasiri H, et al. (2024). Reducing personal protective equipment waste in the emergency department of a large regional hospital: codesign informed by system science. *BMJ Public Health*, 2(2), e000741. <https://doi.org/10.1136/bmjph-2023-000741>.
34. Pedrana A, ... Gibbs L, Block K, ... Gallagher HC, ... Hellar M. Priority populations' experiences of isolation, quarantine and distancing for COVID-19: protocol for a longitudinal cohort study (Optimise Study). *BMJ Open*. 2024;14:e076907. doi:10.1136/bmjopen-2023-076907.
35. Patrick R, Hensher M, Suphioglu C & Huxley R (2024). Asthma-the canary in the Australian coalmine: Making the links between climate change, fossil fuel and public health outcomes. *Health Promotion Journal of Australia: Official Journal of Australian Association of Health Promotion Professionals*, 35(2), 340-344.
36. Rachele, J. N., Burn, G., Burke, K., & Alisic, E. (2024). Improving inclusion for children and young people with a disability in inner-city Melbourne, Australia. *Cities*, 150, 105103.

37. Robinson S, Bowen KJ & Hoetker G (2024). Governance to enable climate resilient development of healthcare systems – A conceptual overview. *The Journal of Climate Change and Health*, 19, 100334. <https://doi.org/https://doi.org/10.1016/j.joclim.2024.100334>.
38. Schultz JH, Alisic E, Harb GJ, Diab SY, Al-Shanti K, Ashour A, Wadsworth D, Barhoum E, Schenzle S, Forsberg JT & Lodi C (2024). Returning to learning following the ongoing war in Gaza – Supporting teachers and students in establishing new school routines and stimulating natural recovery. *Educational Response Brief for Education in Emergencies*, No8. Tromsø: UiT, the Arctic University of Norway.
39. Shahimi F, Block K, Alisic E. Sense of identity among young people with refugee backgrounds: A scoping review.
40. Shahimi F, Block K, Alisic E. 'Still Stood Adamant and Strong to Chase My Dream': Sense of Identity and Resilience among Hazara Youth following Childhood Experiences of Forced Migration. <https://www.tandfonline.com/doi/full/10.1080/15562948.2023.2290644>
41. Tarpey-Brown G, Kirwan J, Wise S, Alisic E, Vaughan C & Block K (2024). Domestic and Family Violence Affecting Children and Young People from Culturally and Racially Marginalised Migrant Backgrounds in Australia: A Scoping Review of Child Experiences and Service Responses. *Trauma, Violence, & Abuse*. 25(5), pp.3872-3886.

42. Thanekar UD, Hensher M, Patrick R, Keel G, Forrester M. Exploring opportunities to reduce scope 3 emissions in renewably powered health services. *Med J Aust*. 2024 May 13. doi: 10.5694/mja2.52308. Epub ahead of print. PMID: 38741349.
43. Walter MC, Morrice MH, Workman B, Robinson MS & Patrick R (2024). Protecting our Health: Implementing an anti-idling campaign in Australia. Available online.
44. Workman A, Campbell SL, Williamson GJ, Lucani C, Bowman DMJS, et al. (2024). Understanding the perspectives and needs of multiple stakeholders: Identifying key elements of a digital health intervention to protect against environmental hazards. *PLOS Digital Health* 3(1): e0000444. <https://doi.org/10.1371/journal.pdig.0000444>.
45. Workman B, Morrice MH, Medcalf MS & Bowen K (2024). Implementing a Health in All Policies Approach in Australia. Available online.
46. Zabihi O, Patrick R, Ahmadi M, Forrester M, Huxley R, Wei Y & Naebe M (2024). Mechanical upcycling of single-use face mask waste into high-performance composites: An ecofriendly approach with cost-benefit analysis. *Science of the Total Environment*, 919, 170469.

Books and Book Chapters

1. Kosta L, Harms L, Gibbs L & Rose D (2024). Supporting Children and Adolescents Post-Disaster. In *The Routledge International Handbook of Social Work and Disaster Practice* (1st Edition ed., pp. 13). Routledge. <https://doi.org/https://www.taylorfrancis.com/chapters/edit/10.4324/9781003309208-33/supporting-children-adolescents-post-disaster-lauren-kosta-louise-harms-lisa-gibbs-david-rose>.
2. Workman A & Bowen KJ (2024). Climate resilient development: What does this mean for health in the Indo-Pacific region?. In *Routledge Handbook of Climate Change and Health System Sustainability* (pp. 151-162). Routledge.

Grants

Grants

1. Alisic E, NHMRC Investigator Grant L1: "Homicide at home: Minimising the impact on young survivors". **\$2,792,745.00**, (2024).
2. Bowen K, Ebi K, Moo E, O'Rourke K, Medcalf S. Terminal Evaluation of the WHO GEF Building Resilience of Health Systems in Asian LDCs to Climate Change Project, **\$88,000**. (June-August 2024).
3. Bowen K, Moo E, Medcalf S, Consultancy on assessing and managing environmental quality in medical facilities. FHI360 Vietnam. **USD \$10,000**, (2024).
4. Bowen K, Patrick R, Workman A, Iese V, Kaisamy O, Patison F, Kerlake Y. PAVE Health: Pacific Action to enhance the Visibility of Evidence on Health and Climate Impacts. Wellcome Trust Climate Impact Awards. **AUD \$4,899,891**, (2025-28).
5. Bowen K, Schwerdtle P, Mansour A. Building resilience: Assessing Knowledge, Attitudes, and Practices on Climate Change and Health in Lebanon's Primary Health Care Sector. Seed Global Health Research Consultancy. **USD 37,400**, (2024-2025).
6. Bowen K, Workman A. 2024 Miegunyah Distinguished Visiting Fellowship Grant (Professor Kris Ebi, University of Washington). University of Melbourne Miegunyah Fellowships. **AUD \$20,000**, (2024).
7. Gallagher HC, Brady K, Gibbs L, Morrice H, Curato N, Quinn P, Cook B, Legacy C, Coutinho J. Barriers to deliberative democracy in community-led recovery. Wildfire Futures Hallmark Research Initiative, University of Melbourne. **\$20,000**, (2024).
8. Gallagher HC, Pattison P, Robins G, Russo-Batterham D, Chamberlain D, Podubinski T, Molyneaux R, MacNeil R, Koskinen J. Social Network Mapping of Mental Health Services in Victoria. Victorian Collaborative Centre for Mental Health and Wellbeing (VCCMHW), **\$250,000**, (June 2024-February 2025).
9. Gao C, Patrick R, Gibbs L, Rickwood D, Simmons M, Cotton S, Fila K, Mensink J, Bower M, Marinkovic Chavez K, Quinn P, Zbukvic, Corney, Gunasiri, and MacDonald. Platform for Research and Interventions in youth Mental health and the Environment (PRIME). 2024 TCR Climate-related health impacts and effective interventions to improve health outcomes. **\$999,890.60** (Yr 1 \$349,787.60, Yr 2 \$278,199.40, Yr 3 \$282,399.40, Yr 4 \$89,504.20) (2025-2028).
10. Gibbs L, Gallagher C, Leppold C. Community Resilience and Recovery Research Partnership. Northern District Community Health. **\$50,000**. (2024-2025).
11. Gibbs L, Marinkovic Chavez K, Quinn P, Nurse J, Ulubasoglu M, Cowlshaw S, Tekin E, Cobham V, Molyneaux R, Patrick R, Vella-Broderick D. Teacher Climate Superpowers: Co-developing and testing climate change related resources and strategies to support teacher mental health and wellbeing. Teachers Health Foundation. **\$400,000** (2024-2025).
12. Gibbs L, Molyneaux R, Nguyen S. Post disaster dementia – finding alternate pathways. CHE/CCP incubator scheme. **\$15,000**, (2024).
13. Hitchcock C, Lyon D, Healy G, Goode A, Alisic E & Koye D. Left Write Hook: A survivor-led program to empower adult survivors of child sexual abuse MRFF, **\$599,820**, (2024-2026).
14. Jiang M, Mulvenna V, Hester S, Gibbs L, Barnett J, McKenzie M, Mortreux C, Keele S, Waters E, Phung J, Marinkovic Chavez K, Quinn P. The Climate Resilient Education Project: Strengthening disaster resilience and empowering adaptation. Disaster Ready Fund. **\$1,310,000** (2025-2027).
15. Leppold C. Travel funding for National Indigenous Disaster Resilience (NIDR) Gathering 2024 in Lismore NSW. Centre for Mental Health and Community Wellbeing. **\$2,000**, (2024).
16. Leppold C, Jordan H, Ashby L, Taiaroa G, Gibson E. Pilot trial of the COORDINATE (Co-occurring Disasters and Infectious Disease Outbreaks) Policy Toolkit. MDHS Climate and Health Funding, **\$35,837**, (2024-25).
17. Marinkovic Chavez, K. Co-designing peer support for children bereaved by intimate partner homicide. Early Career Researcher Grant, University of Melbourne. **\$32,608**, (2025).
18. Marinkovic Chavez K. Travel funding for Australasian Conference on Traumatic Stress (ACOTS) to present on her work in the domestic homicide project. Centre for Mental Health and Community Wellbeing. **\$1,095**, (2024).
19. McGain F, Best S, Busing K, Higgins A, Patrick R, Monty J, Kainer M, McAlister S, Sinnott R, Walshe C. Healthcare Environmental Sustainability: Creating the evidence to drive adoption of high value initiatives in Australian Hospitals. NHMRC, Collaborations in Health Services Research, **\$995,919.80**.
20. Morrice H. Travel funding for Better Futures Forum in Canberra. Centre for Mental Health and Community Wellbeing. **\$1,900**, (2024).
21. Morrice H, Walter C, Workman A, Patrick R, Wylie K, Isles M, Lycett K. 'Idle Off: Establishing a national anti-idling campaign to address the health impacts of traffic-related air pollution on Australian children'. Climate CATCH lab sapling grant. **\$25,900**, (2024).
22. Patrick R, Bowen K, Workman B, partnership with Pacific Climate Change Centre and the Climate and Health Alliance). 'First Impacted, First Heard: Prioritizing Local and First People's knowledge on climate and health in research and policy action', WHO, **AUD \$71,000**, (2024-2025).
23. Peel J, Bowen K, Workman A, 'Advancing Climate Adaptation, Resilience and Just Transitions in the Indo-Pacific', DFAT Australia Awards, (**AUD \$500,000**, 2024-25; MCF and PCCC)
24. Quinn P, Barker N, Marinkovic Chavez K, Vella-Broderick D, Gibbs L. 'Teacher wellbeing through climate change and disasters' has been awarded MDHS Climate and Health Funding. **\$40,000**, (2024-25).
25. Tehan B, Gibbs L, Ulubasoglu M, Howard A, Coghlan A, Williamson B, Quinn P, Tong L, Khalil U, Pullabhotla H, Bowd C, Johnston D. Support integration of Recovery Capitals in service plans for communities with different levels of social disruption. Natural Hazards Research Australia. **\$599,000**, (2025-2027).

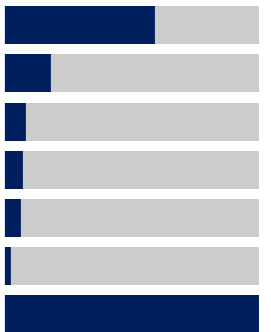




Financial Summary

Estimated final **income** and breakdown at 31 Dec 2024

Category	Amount (\$)	% of total
University	1,917,883	59
Courses and consultancies	567,829	18
Government	264,382	8
Competitive research	219,408	7
Philanthropic	200,000	6
Non-government	71,717	2
Total	3,241,219	100



Estimated final **expenditure** and breakdown at

Category	Amount (\$)	% of total
Salary & stipends	1,985,884	75
Non-salary	460,999	17
Outgoings for shared grants	200,000	8
Total	2,646,883	100



Disaster, Climate and Adversity Unit

Centre for Mental Health & Community Wellbeing, Melbourne School of Population and Global Health, The University of Melbourne

Website

<https://mbspgh.unimelb.edu.au/centres-institutes/centre-for-mental-health/research-group/disaster-climate-and-adversity>

This report was produced in-house by the Disaster, Climate and Adversity Unit and designed by Alana Pirrone.

This report is printed on recycled paper (cover 60%, inside pages 100%).

Major thanks for funding support

We are very grateful for the funding received over the years from generous supporters, ensuring our program of research is able to have a positive and enduring impact on the health and wellbeing of communities.

It is only possible to conduct meaningful research if we have funding partners who share our vision to make a difference. If you would like to support our next steps please contact Professor Lisa Gibbs at +613 8344 0920 or lgibbs@unimelb.edu.au.