

Images for: Severe hypoglycaemia and mortality after cardiovascular events for Type 1 diabetic patients in Sweden

Figure 1 – Survival after a cardiovascular disease event, stratified by prior hypoglycaemic events

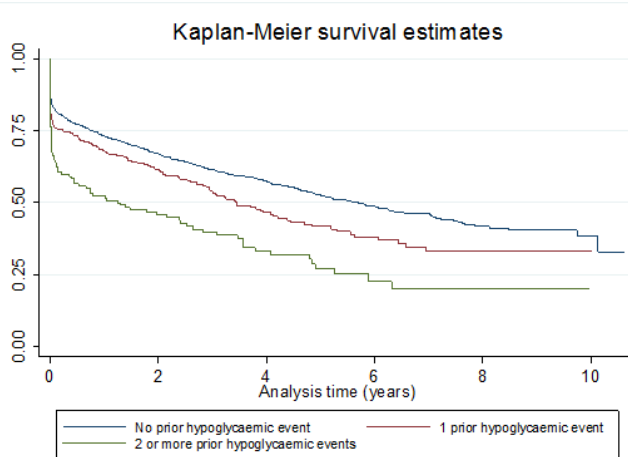


Figure 2—Estimated 5-year mortality risk after CVD events for 60-year-old patients with particular characteristics. Combined mortality from logistic and Cox regressions for baseline patient (without prior diabetes complications) and patients having had a prior hypoglycaemic (hypo) event, a prior stroke event, a prior heart failure (HF) event, macroalbuminuria, CKD stage 3 or above, and the Swedish type 1 diabetic population for patients experiencing 1) an MI at age 60 years or 2) a stroke at age 60 years.

