



Centre for Health Equity – Director Prof Brian Oldenburg

Unit	Head	Programs
Evidence & Child Health	A/Prof Lisa Gibbs	Jack Brockhoff Child Health & Wellbeing Public Health Insight Beyond Bushfires: Community, Resilience and Recovery
Gender & Women's Health	Prof Anne Kavanagh	Sexual and Reproductive Health Disability Housing and the Built Environment Cancer Prevention WHO Collaborating Centre in Women's Health Work, Gender & Mental Health
Health Humanities and Social Sciences	A/Prof Richard Chenhall	Alcohol and Other Drugs Ethics Historical Demography Health Social Sciences
Indigenous Health Equity	Prof Kerry Arabena	Indigenous Eye Health First 1000 Days Australia and International Healthy Country, Healthy People Addressing Family Violence Overcoming barriers to cervical screening
Indigenous Studies	Prof Marcia Langton	Indigenous Studies Agreements with Indigenous People Alcohol Policy & Alcohol Management Plans Cultural Heritage, Material Collections, and Digital Technology
Non Communicable Disease Control	Prof Brian Oldenburg	Interventions to Improve Prevention Pathways to Causation and Outcome Evidence to Improve Uptake of Prevention Building Global Research Capacity



Melbourne School of Population and Global Health

Melbourne School of Population and Global Health Prof Terry Nolan (Head)

**Centre for Mental
Health**
- Jane Pirkis

Mental Health Policy and
Practice
Population Mental Health
Global and Multicultural Mental
Health

**Centre for Health
Policy**
- Philip Clarke

Evaluation and Implementation
Science
Health Economics
Health Systems & Workforce
Law & Public Health

**Centre for
Epidemiology &
Biostatistics**
- Mark Jenkins

Allergy and Lung Health
Australian Twin Registry
Biostatistics
Breast Cancer
Colorectal Cancer
High Dimensional Analytics
Male Health
Modelling and Simulation
Neuroepidemiology
Sexual Health
Teaching and Learning

**Nossal Institute for
Global Health**
- Barbara McPake

Governance and Finance
Disability and Inclusive
Development
Education and Learning
Maternal, Sexual and
Reproductive Health
Teaching and Learning
Nossal Institute Ltd
Company

**Centre for Health
Equity**
- Brian Oldenburg

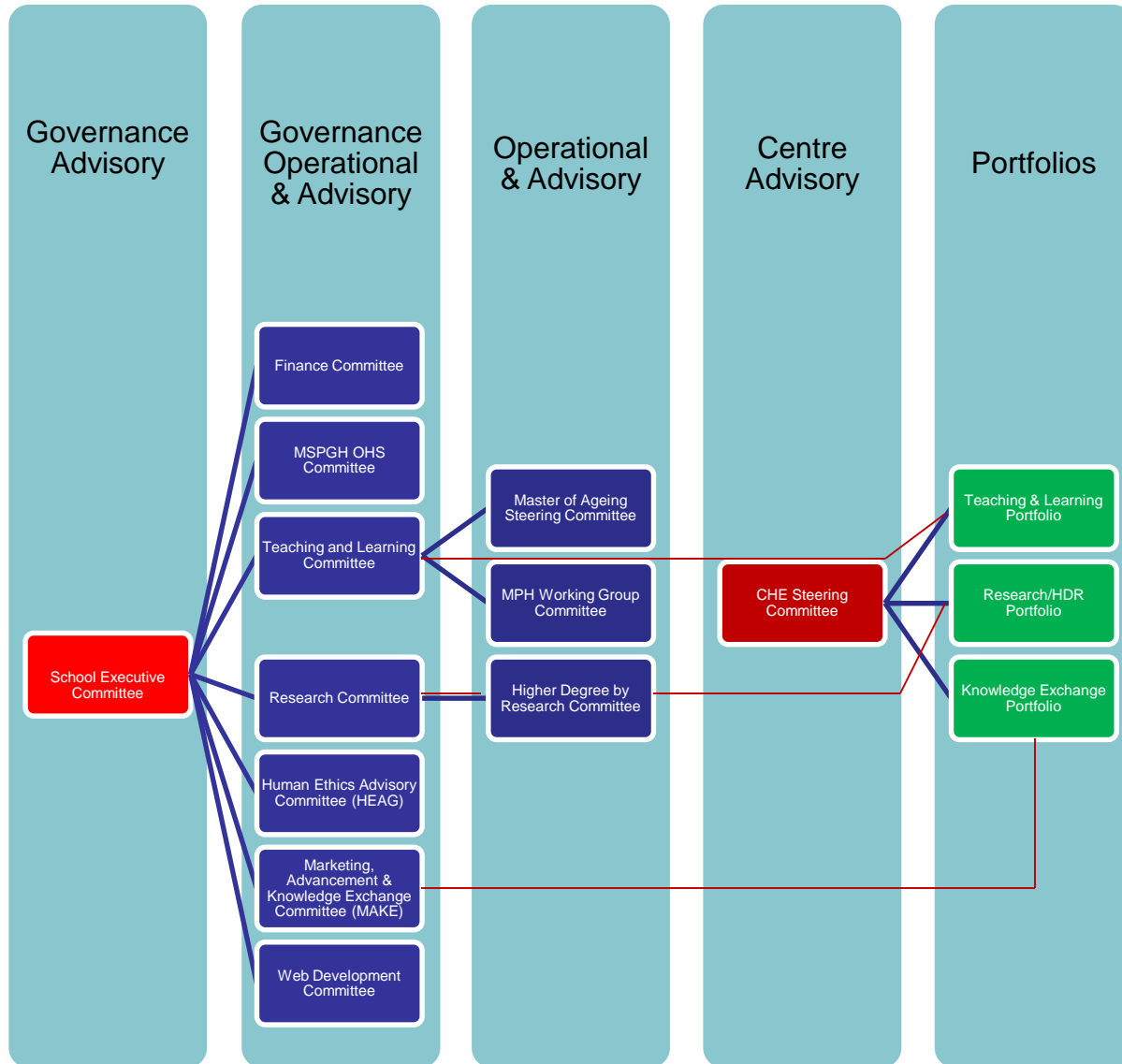
Health Humanities and
Social Sciences
Gender and Women's
Health
Indigenous Health Equity
Non Communicable
Disease Control
Evidence & Child Health
Indigenous Studies

Partnership Groups

Global Burden of Disease Group – Alan Lopez
Vaccine and Immunisation Research Group – Terry Nolan



CHE Portfolios





Kylie Gilmartin

Centre Manager (F/T)

- Centre budget management
- Portfolio allocation
 - Indigenous Health Equity Unit
 - Indigenous Studies
 - Gender and Women's Health Unit
 - Health, Humanities and Social Sciences Unit
 - Indigenous Eye Health programme
- Strategic and business planning
- Team management and leadership
- Escalated problem resolution
- Represent CHE at School/Faculty/Uni Committees
- Process improvement

Ruth Hentschel

Centre Operations(F/T)

- Centre Director EA activities
- Secretariat – CHE Steering Committee
- Publications co-ordinator
- CHE website maintenance
- Honorary contract management
- Induction activities
- Stationery
- Process improvement
- CHE events and activities co-ordinator

Rebecca Gracey – Centre Manager – Nossal Institute

- Portfolio allocation
 - Non-Communicable Disease Unit
 - Gender and Women's Health Unit

Meg Cox

Business Manager (Thu)

- Assisting with portfolio management
- Project management
- Process improvement

Michelle Kelsey - Business Manager (Tue, Wed, Thu & alt Fri) (0.5 EFT)

Portfolio allocation

- Evidence and Child Health Unit
- Bec Bentley GWH Unit
- Process improvement

Jason Zheng

Business Projects Coordinator (F/T)

- Manage che-research@unimelb.edu.au email
- Fixed Term renewal oversign
- Recruitment processes
- Support to Centre and Business Manager(s)
- CHE HERDC Submission Management
- Process improvement
- Cabcharge management